



**2019**



SMILE JESUS  
LOVES YOU

## GAME FEEDERS & ATV ACCESSORIES



*Be Sure to Check Us Out For ALL Your Feeder And ATV Needs!*

**1-800-333-9143**

3715 HWY 71, COUSHATTA, LA 71019

*Family Owned and Operated SINCE 1976*



# SALVATION'S FREEWAY

## ALL HAVE SINNED

"For all have sinned and come short of the glory of God." Romans 3:23

## The Penalty of Sin is Death

"For the wages of sin is death; but the gift of God is eternal life through Jesus Christ our Lord. Romans 6:23

## Jesus Christ Died for our Sin

"But God demonstrates his own love for us in this: While we were still sinners, Christ died for us." Romans 5:8

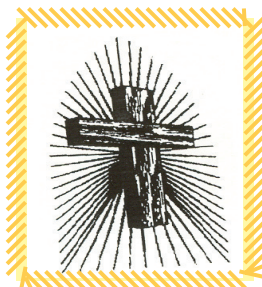
## To Be Forgiven for our Sin, we must Believe and Confess that Jesus is lord.

Salvation comes through Jesus Christ.

"If you declare with your mouth, "Jesus is Lord," and believe in your heart that God raised him from the dead, you will be saved. For it is with your heart that you believe and are justified, and it is with your mouth that you profess your faith and are saved." Romans 10: 9-10

*It's not just saying the words that save you. Pray it, believe it, and live it. Jesus Will Change Your Life.*

**\*\*Matthew 7:17-20\*\***



## Prayer for Salvation

Dear Lord Jesus,  
I believe You are the Son of God and died to forgive me of my sins. I know I have sinned. I ask You to forgive me. I turn from my sins and I receive You as my Lord and Savior Thank You for saving me.

**Amen**

---

## Is there hope for America?

Will we become the great nation that we are capable of becoming?

Or will we slip deeper and deeper into moral and spiritual decline?

The good news is that there is hope for America! But only if we humbly bow before GOD in prayer and confession -

As Pastor Joe Wright did before the State House in Topeka, Kansas.

Will you join in this profound prayer?

If we truly pray this prayer in believing Faith we - and our nation - will never be the same.

Heavenly Father, we come before you today to ask Your forgiveness and seek Your direction and guidance.

We know Your Word says "Woe to those who call Evil good," but that's exactly what we have done.

We have lost our spiritual equilibrium and inverted our values.

## ***We confess that:***

We have ridiculed the absolute truth of Your Word and called it moral pluralism;

We have worshiped other gods and called it multiculturalism;

We have endorsed perversion and called it alternative lifestyle;

We have exploited the poor and called it lottery;

We have neglected the needy and called it self-preservation;

We have rewarded laziness and called it welfare;

We have killed our unborn and called it choice;

We have shot abortionist and called it justifiable;

We have neglected to discipline our children and called it building esteem;

We have abused power and called it political savvy;

We have coveted our neighbors possessions and called it ambition;

We have polluted the air with profanity and pornography and called it freedom of expression;

We have ridiculed the time-honored values of our forefathers and called it enlightenment.

Search us, O God, and know our hearts today; try us and see if there be some wicked way in us to cleanse us from every sin and set us free. I ask it in the name of your Son, the Living Savior, Jesus Christ,

**Amen.**



# STEPS TO PREPARING A GOOD FOOD PLOT 3



**1**  
Prepare a Good Seed Bed. The Ground Buster ATV Disc Can Do It.



**2**  
Spread Your Seed The Easy Way With The Deluxe ATV Spreader By On Time.



**3**  
**Firm Your Seed Bed — The Compactor**  
The large 12" drum can be filled with water giving you additional weight. Easy pulling. Heavy angle frame with pillow block bearings.



## ***Helpful Hints in Preparing a Good Food Plot***

- 1. Soil Test:** Before adding lime and fertilizer, have a soil test taken. Although most woodland areas need lime and fertilizer and Lime.
- 2. Prepare the Soil:** Disc very good. Good seed to soil contact is essential for quick germination and a thick productive stand.
- 3. Broadcast Seed:** Use a spreader as above or a hand seeder. Spreaders provide good even distribution.
- 4. Firm your Seedbed:** The use of The compactor above does a great job. This allows you to cover your seed from 1/4" to 1/2" deep. A packed seed bed provides a faster germination.
- 5. Avoid:** Wet areas, sandy soil and shallow rock soil. A minimum of 50% sunshine is essential for a healthy food plot.

***We Also Carry Fertilizer  
and Pelletized Lime to Help  
Get a Good Jump Start.  
Give Us a Call Today!***

**OTHER GREAT SUPPLIES ALSO AVAILABLE. GIVE US A CALL AT 1-800-333-9143**



## *The Original Ground Buster* IDEAL FOR FOOD PLOTS & GARDENING

SIMPLY FLIP OVER TO PUT INTO CUT OR TRAIL POSITION



**HEAVY  
DUTY**

**Built Tough For  
The Long Haul**



**Deep Cutting Action**

### Features:

**FRAME:** Heavy Channel Iron Construction — Provides Excellent Weight Carrier. Color is Brilliant Red.

**TIRE:** Large 600 X 6 OD Size 15"

**TONGUE:** Heavy 3/4" Thick X 2-1/2" Wide X 60"

**TURNING:** Can make sharp turns without tire hitting tongue

**BALL COUPLER:** 2" coupler provides smooth pulling — Not a Snatching motion like the Pin on styles.

**BLADES:** Heavy 16" notched blades — found on tractor type Agricultural Disc. With 1" square axle. Pre-set Angle provides good cutting action, with minimum pull on your ATV or Garden Tractor.

**BEARINGS:** Heavy Agricultural Cast Iron greaseable. Long Lasting. Grease fittings are placed at rear of Disc — No danger of brush or dirt damage.

### TWO SIZES AVAILABLE

**6 Blade:** Four ft. wide Pulls with a 250 cc bike or a 16 HP Garden Tractor. Wt. 250 lbs.

**Order # ATVD** **\$725.00**

**8 Blade:** Five ft. wide Pulls with a 400 cc bike or larger. Wt. 285 lbs.

**Order # ATVD-5** **\$775.00**

*Ships by truck to a business location*

4 FT. Model Pulls Easily  
with as little as a 250cc ATV  
Or Large Garden Tractor.

5 FT. Model Requires  
Minimum Of 400cc ATV, Standard size  
UTV, Or Small Tractor.



## CHAIN HARROWS

**Simple To Use:** Simply relocate pull bar to opposite end for more or less aggressive harrowing.

**Pull with an ATV — Jeep — Truck — Tractor**

### Application:

- **Leveling:** Race tracks, playing fields, ant nest, gopher mounds, trail rides, spreading manure, etc.
- **Seed Beds:** Food plots, harrowing the seed in the soil.
- **Grass Stimulator:** Revitalizes the grass, allowing the moisture and air to reach the roots.



**Also  
Available  
in Heavier  
Models.**

**4 ft — Wt. 150 lb. Order # M-FCH48**

**\$350.00**

**6 ft — Wt. 225 lb. Order # M-FCH72**

**\$675.00**

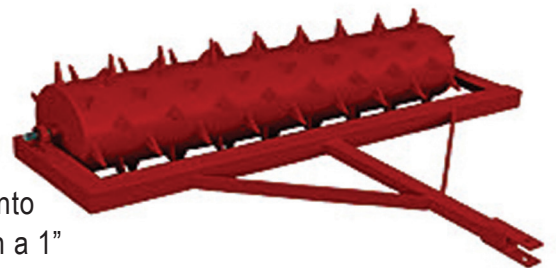
## SMILE JESUS LOVES YOU

...A smile costs nothing but gives much. It enriches those who receive without making poorer those who give. It takes but a moment, but the memory of it sometimes lasts forever. None is so rich or mighty that he cannot get along without it and none is so poor that he cannot be made rich by it. Yet a smile cannot be bought, begged, borrowed, or stolen, for it is something that is of no value to anyone until it is given away. Some people are too tired, too serious to give you a smile. So give them one of yours, as none needs a smile so much as he who has no more to give.

## AERATORS

### Reseeding Lawns – Pastures – Food Plots

The heavy 3" x 3/8" thick teeth welded to the large 12" Drum provides great soil penetration; thus allowing Moisture and air into the root system. The heavy angle frame is well constructed with a 1" axle and pillow block bearings. The large 12" drum can be filled with Water for extra weight, allowing deeper penetration



**Empty/Filled**

**Order # M-ARP48K | Wt. 243/453**

**\$899.00**

**Order # M-ARP60K | Wt. 282/545**

**\$985.00**

***Also available In Lift Type!***



## GUN BOOT IV



(Available in Black or Mossy Oak)

## Features

- Handles 50 mm scopes-right or left handed bolt action rifles. Airline approved.
- Case is high density polyethylene with plush lining.
- Hold tiny .22s to large rifles with 50mm scopes.
- Molded in handle makes carrying comfortable & convenient.
- Rifle scopes are suspended so they hold zero.
- Mounts easily on ATV with Gun Boot IV Brackets.

## BLACK

Order # 20051      \$ 59.95

## MOSSY OAK

Order # 20061      \$ 89.95

## BOOTECTOR-UNIVERSAL MOUNTING BRACKET



Gun Boot Sold Separately

- Compact, convenient, and secure mounting.
- Mounts to nearly all ATV Racks.
- Adjust without the use of any tools.
- Compact Design provides more room on the rack.
- Durable and Lightweight.

Order # 20035      \$59.95

*Jesus answered, "I am the way and the truth and the life. No one comes to the Father except through me. - John 14:6*



53"W X 4"D X 17"H

UTV GUN HOLDER  
Fits Most UTV Roll Cages

- Heavy-duty ProtekX6 fabric with water-resistant backing and exterior coating for maximum weather and abrasion protection.
- Holds 2 Guns. One rifle or shotgun fits in each side.
- Three large gear pockets for extra shells or other items.
- Attaches securely to the back of UTV roll cages with heavy-duty straps and quick-release buckles.
- Bottom D-rings provide additional lash points.
- Extra-thick padding keeps rifles protected.
- Two-year limited warranty.

## CAMO

Order # UTVGCC      \$89.95

## BLACK

Order # UTVGCB      \$81.95



## GUN BOOT & BRACKET COMBINATION

The most economical way to mount a Gun Boot on your ATV – the Kolpin Gun Boot® 4.3 with bracket. This compact design of this bracket provides for universal fit to most ATV racks or UTV roll bars, but also leaves room for your other valuable gear. Designed to accommodate left and right hand bolt action rifles and shotguns, it provides ample room for rifles with 50mm scopes and slings attached, or shotguns up to 51" in length.

***This is  
a Great  
Buy!***



Order # 20053

**\$ 99.95**

## UNIVERSAL MOUNT GUN RACK

Free up cargo space and keep guns secure. Fits most ATV's

### Features:

- All Metal
- Powder Coated Finish.
- Fin Grip Mounts.
- Easy And Secure Mounting.
- Holds Two Guns.
- 

Fits Suzuki, Honda, Yamaha,  
Polaris, Kawasaki, Artic Cat

Order # GR120

**\$64.95**



==== Fits Many Models Available ====





## UTV GUN RACK

### HORIZONTAL MOUNT

- Fits All Wire Mesh Units
- Keeps Guns, Bows, Arrows, Fishing Rods, Garden Tools, etc. securely in place.
- Uses Rhino Grip Part # 21500 Holder. See Details Below.

**Order # MGR**

**\$54.95**

## CAB MOUNT

### GUN RACK

#### VERTICAL MOUNT

- Floorboard Mount: Less than 25" tall. Easy mounting- must drill two holes.
- Uses Rhino Grip-XL Part # 21510. See details Below

**Order # MGRSU**

**\$59.95**



## RHINO GRIP

Comes complete with mounting hardware. Installs in minutes on a variety of applications



Universal Mounting Blocks Allow A Variety of Mountings For Guns, Bows, Arrows, Fishing Rods, Garden Tools, etc. Offset mounting to maximize rack space. Includes securing straps. Sold as a pair.

**Order # 21500**

**\$24.95**

**Best Seller**

## RHINO GRIP XL



First fully adjustable grip with no tools required. Rotates 360°. Tilts from 0 - 180°. New Quick Clip design for Easy on/off removal and rotation in field. They are designed to fit ATV's, UTV's, RV's, Trucks and Trailers. Includes mounting hardware and securing straps. Sold as a Pair

**Order # 21510**

**\$29.95**

**www.ontimegamefeeders.com or call us at 1-800-333-9143**



## CAMO WEATHER COVERS

Protect and conceal your ATV, lawn mower with this tough water repellent nylon cover. The bottom is hemmed with a tough elastic cord for a tight, snug secure fit. With storage case.

**Woodlands Camo**

**Order # ATVC-C**

**\$36.95**

XXL covers are designed to cover ATV's with rack Extensions, windshields, spreaders, game carriers, etc.

**Woodlands Camo**

**Order # ATVC-CXXL**

**\$39.95**



## TANK SADDLE BAGS

*MOSSY OAK CAMO*



Keep small items close at hand. Fits over gas cap. Two Zippered compartments with storm flaps, insulated Exterior pocket holds a one liter bottle. Mesh pocket inside for wallets & keys. Tough 600 denier water resistant Polyester material

**Order # SB6-MO**

**\$19.95**

## HAND PROTECTOR MITTS

*Now Only Available in Black*



Protects Your Hands From Wind, Cold, Brush, Briars and Rain. Easily Attaches to Handle Bars and Stays Securely in Place with Velcro Straps. Tough 600 Denier Water Resistance Poly Material. Insulated and Lined with Warm Grip. They Do Not Restrict the Use of Controls.

**Order # ATVM-MO**

**\$16.95**

## UTV WEATHER COVERS

**One Size Fits All**

John Deere Gator — Polaris — Kubota  
Kawasaki Mule — Arctic Cat 500 TBX  
Fits most UTV'S with Roll Bar

**Order # 78147**

**\$76.95**





## DELUXE PADDED REAR PACK

Size: 35" x 19" x 9"



Plush 2" thick cell foam bottom. Three large zipper compartments. Attaches quickly & easily with 6 pair of hook & loop straps. Extra tough 600 denier polyester material with a waterproof coating.  
Easily removed for use as comfortable seat.

Order # ATVPB-MO **\$59.95**

## DELUXE REAR PACK

Size: 34" x 16" x 9"



Wrap around design, fits front & rear racks. Three large padded lined zippered compartments. Two are coolers with insulated leak proof liners & holds 24-12 oz. cans. With storm flaps & deluxe zippered pulls. Attaches with 6 pair of hook & loop straps. Tough rugged 600 Denier polyester water resistant. **3200 cubit inches.**


Order # ATVDB-MO **\$54.95**

## ATV SEAT COVER

- Protects Seats From Dirt and Weather.
- Covers Old Seats to Look Like New.
  - Fits All ATV's.
- Elastic Hem for a Quick Snug Fit.



**\$19.95**

PW Camo **Order # 72339**  Black & Gray **Order # 72337**

*The steps of a good man are ordered by the LORD,  
and He delights in his way.*

*Psalms 37:23*

## ATV FENDER BAG

*Adds extra storage space to ATV*



### Features

Attaches quickly with adjustable straps and hook & loop tape

Two Zippered Pockets  
Keep Small Items Handy  
And Secure

Foam Back Protects  
Valuables

Constructed of rugged 600-denier polyester water-resistant pack material. Equipped with storm flaps and deluxe zipper pulls. Fits Front or Rear Rack.

Black **Order # ATVF-B \$17.95**  
Camo **Order # ATVF-MO \$21.95**



## Features

- Constructed of 3/4" 16 gauge sq. tubing
- 1/2" Expanded metal.
- Durable Hi Gloss black powder coat finish resist rusting, chipping.
- Approximate size 36" wide x 13-3/4" Deep x 6" Height.
- Complete with mounting hardware.



**Starting at  
\$129.95**

Manufacturer	Order #
<b>HONDA</b>	
Foreman 400, 450, 450S	FR230
Foreman 500S/SE	FR239
Fourtrax (Trx) 300	FR214
Rancher 420S, ES	FR239
Rancher 350S/ES 4X2, 4X4	FR214
Recon 250, 250ES	FR214
Rincon 650, 680, 4X4	FR227
Rubicon 500 4X4	FR239
<b>KAWASAKI</b>	
Bayou 250 4X2	FR230
Prairie 360 4X4, 4X2	FR230
Brute Force 650, 750 4X4	FR227W
<b>SUZUKI</b>	
Eiger 400 4X4, 4X2	FR227
King Quad 450, 500, 700, 750	FR228W
King Quad 300, Ozark 250	FR214
Vinson 500 4X4	FR239
<b>POLARIS</b>	
Sportsman 400 - 800	FR238
Sportsman 550XP	FR244

Manufacturer	Order #
<b>YAMAHA</b>	
Bear Tracker 250	FR214
Big Bear 250	FR227
Big Bear 400, 400IRS	FR227
Big Bear 450IRS	FR227W
Big Bear 400 4X4	FR227
Grizzly 350	FR227
Grizzly 400, 450, 550	FR227W
Grizzly 600, 660, 700	FR227W
Kodiak 400 4X4	FR227
Kodiak 450	FR227

"Nothing outside a man can make him unclean by going into him. Rather, it's what comes out of a man that makes him unclean" - Mark 7:15

## ATV GAME HANDLER

One of the simplest, most a economical methods of lifting game onto your ATV.

Two Styles Are Available.

HARDWARE INCLUDED

**For Wire Mesh Racks**

**Order # AGH-WM**

**For Tubular Racks**

**Order # AGH-T**

**\$89.95**



## CHAIN SAW CARRIER

Allows you to carry your chain saw Safely and Secure. Our carrier prevents damage to your chain. Any oil and gas leakage from your saw is kept to the outside. With some minor modification can also Mount on Your Utility Trailer.

Carries a chain saw up To a 20" bar.  
Hardware included. Wt. 6 lbs

**Order # CSC \$34.95**







A larger design for the '07 & '08 Arctic Cats

**ADD W TO ORDER # FOR WRINKLE FINISH**

Constructed of 1"-16 gauge square tubing, with 1/2" expanded metal. Durable Hi Gloss black powder coat finish-resist rust, chipping and peeling. Approximate size 42" wide x 25" length x 6" height. Complete with mounting hardware.

Also available in 3/4 " for smaller bikes. **Ships FEDEX — Additional postage required add \$10.00**

Manufacturer	Order #	Manufacturer	Order #
<b>ARTIC CAT</b>		<b>SUZUKI</b>	
250, 300, 366, 375, 400, 454, 500	RR550	Ozark 2500	RR559
400, 500, 650HI, 700EFI, 4X4	RR564	Eiger400	RR550
700HI 4X4	RR550	King Quad 300, 400	RR550
<b>HONDA</b>		Vinson 500	RR550
Foreman 400, 450	RR550	<b>YAMAHA</b>	
Foreman 500	RR550	Bruin 350 4X4	RR550
Rancher 350, 400	RR550	Big Bear 400IRS	RR550
Rancher 420	RR550	Grizzly 350IRS	RR550
Recon 250	RR536	Grizzly 450	RR550
Rincon 650	RR556	Grizzly 660, 700	RR550
Rincon 680	RR556	Kodiak 400, 450	RR550
Rubicon 500 4X4	RR550		
<b>KAWASAKI</b>		<p>If any of you lacks wisdom, he should ask God, who gives generously to all without finding fault, and it will be given to him. But when he asks, he must believe and not doubt, because he who doubts is like a wave of the sea, blown and tossed by the wind.</p> <p>— James 1:5-6</p>	
Bayou 300 4X4	RR550		
Prairie 360 4X4, 4X2	RR519		
Brute Force 650I, 750 4X4	RR550		

## RECEIVERS FOR OFF ROAD USE

**Tow Hitch**  
Fits 1-1/4" Receiver

**ORDER**

# MTH

**\$19.95**



**Ball Hitch**  
Fits 1-1/4" Receiver

**ORDER**

# MRHB

**\$24.95**



**Receiver  
Adaptor**

1-1/4" to 2"

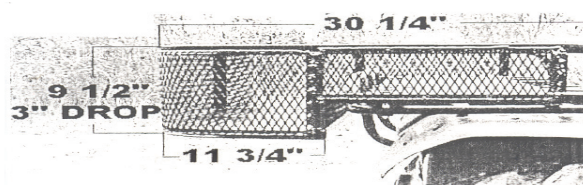
**ORDER**

# ATV-CV

**\$24.95**







ADD W TO ORDER # FOR WRINKLE FINISH

## MINI DROP RACK FEATURES

Can carry 3 Five Gallon Cans & More

Constructed of 1"-16 gauge square tubing, with 1/2" expanded metal with continuous solid weld. Durable black powder coat finish for years of durability. Also available in 3/4 " for smaller bikes. Complete with mounting hardware.

Ships FEDEX .

Additional postage Required add \$10.00

**Starting at \$213.99**

These are Just a Few of the Most Popular Models. We have a Complete Listing to fit your ATV and UTV Needs.

We're all encouraged by a leader who stirs us to move ahead, someone who believes we can do the task he has given and who will be with us all the way. God is that kind of leader. He knows the future, and his plans for us are good and full of hope. As long as God, who knows the future, provides our agenda and goes with us as we fulfill his mission, we can have boundless hope. This does not mean that we will be spared pain, suffering, or hardship, but that God will see us through to a Glorious conclusion.

Give us a call at  
**1-800-333-9143**

You will speak to a live person.  
We would Like to hear from You!

Manufacturer	Order #
<b>ARTIC CAT</b>	
250, 300, 366, 375, 400, 454, 500	MDR550M
500 4X4	MDR564M
700 4X4, 700I	MDR550M
<b>HONDA</b>	
Foreman 400, 450, 500	MDR550M
Fourtrax 300	MDR517M
Rancher 350, 400, 420	MDR550M
Rincon 650, 680 4X4	MDR556M
<b>KAWASAKI</b>	
Bayou 300 4X4	MDR550M
Bayou 400 4X4	MDR550M
Brute Force 650, 650I	MDR550M
Brute Force 750, 750I	MDR550M
Prairie 300, 400	MDR550M
Prairie 700	MDR550M
V-Twin 650	MDR550M
<b>POLARIS</b>	
Sportsman 400 4X4	MDR569M
Sportsman 500 4X4	MDR569M
Sportsman 850XP 4X4	MDR567M
Sportsman 550XP 4X4	MDR567M
<b>SUZUKI</b>	
Eiger 400	MDR550M
King Quad 300	MDR550M
King Quad 450, 500	MDR550M
King Quad 700 4X4	MDR550M
King Quad 750 4X4	MDR550M
Ozark 250 4X2	MDR526M
Twin Peaks 700 4X4	MDR550M
<b>YAMAHA</b>	
Big Bear 350, 400, 400IRS	MDR550M
Grizzly 350, 350IRS	MDR550M
Grizzly 400, 450, 550 4X4	MDR550M
Grizzly 600, 660, 700 4X4	MDR550M
Kodiak 400, 450	MDR550M

OTHER GREAT SUPPLIES ALSO AVAILABLE. GIVE US A CALL AT 1-800-333-9143



# 14 CUSTOM FIT LARGE DROP REAR RACKS



**Starting at  
\$254.95**

ADD W TO ORDER # FOR WRINKLE FINISH

## Can Carry 2 to 3 Five Gallon Cans and more

Constructed of 1"- 16 gauge square tubing, with 1/2" expanded metal. Durable Hi Gloss black powder coat finish-Resist rust, chipping and peeling. Approximate size 42" wide x 33" length x 12" deep.

Also available in 3/4" for smaller bikes Complete with mounting hardware.

Ship FEDEX. - Additional postage required add \$10.00

Manufacturer	Order #	Manufacturer	Order #
<b>ARTIC CAT</b>		<b>SUZUKI</b>	
250, 300, 366, 375, 400, 454, 500	RRL550L	Eiger 400 4X2, 4X4	RRL550L
650 4X4	RRL550L	King Quad 400, 450, 500, 750	RRL550L
700 4X4	RRL550L	Quadmaster 500	RRL550L
<b>HONDA</b>		Quadrunner 250	RRL550L
Foreman 400, 450, 500	RRL550L	Vinson 500	RRL550L
Rancher 350, 400, 420	RRL550L	<b>YAMAHA</b>	
Rincon 650, 680	RRL556L	Big Bear 350	RRL550L
Rubicon 500	RRL550L	Big Bear 400 4X2, 4X4	RRL550L
<b>KAWASAKI</b>		Grizzly 350, 350IRS	RRL550L
Bayou 300 4X4	RRL550L	Grizzly 550, 600, 660	RRL550L
Brute Force 650, 750 4X4	RRL550L	Grizzly 700	RRL550L
Prairie 300, 400 4X2	RRL550L	Kodiak 400 4X4	RRL550L
Prairie 360 4X2, 4X4	RRL519L	Kodiak 450	RRL550L
Prairie 700 4X4	RRL550L		
V-Twin 650 4X4	RRL550L		

## Get Lost Sometimes?

Let This Be Your GPS.  
Read God's Word Daily To Help  
You Find Your Way. Try it!  
You Have Nothing To Lose.



## HEAVY DUTY RATCHET STRAPS

3,300 lb. Breaking Strength  
2" Wide x 27 ft. length

Order # RS3513  
**\$21.95**



[www.ontimegamefeeders.com](http://www.ontimegamefeeders.com) or call us at 1-800-333-9143



## BI-FOLD RAMPS

- Includes Tie Straps & Plastic Coated Ends To Protect Painted Surfaces
- Heavy Duty
- 1000lb Capacity
- Folds Easily For Easy
- Transport

### Order # LR40

Folded 20" Wide, Unfolds to 40" Wide  
Wt. 27 lb

**\$139.95**

### Order # LR44

Folded 22" Wide, Unfolds to 44" Wide  
Wt. 28 lb

**\$149.95**



My dear brothers, be steadfast, immovable, always excelling in the Lord's work, knowing that your labor is not in vain.

- 1 Corinthians 15:58



## ARCHED RAMPS

- 1500 lbs Loading Capacity
- Measures 7 ft 4 in Overall length
- 12 in wide
- Wt 35 lb

Order # 712 **\$214.95**

## WIDE TRIFOLD LOADING RAMPS

WIDE TRACK TRI-FOLD — Load Capacity 1000 lbs.  
Folds to 17" Wide — Unfolds to 51" Wide  
6 Ft. Long — Weight 28lb.

Order #451-TF **\$154.95**

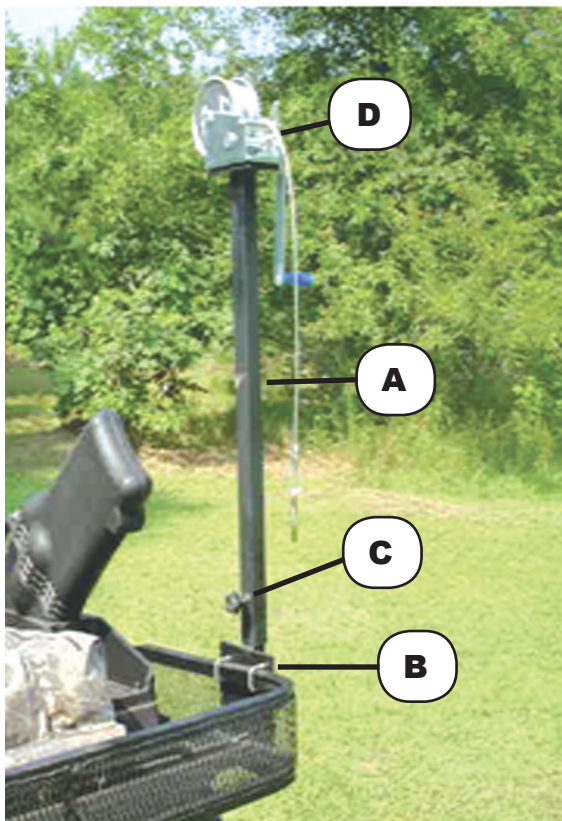
Rubber Replacement Tips For Ramp Ends # RET \$1.00

**\*ALL RAMPS REQUIRE ADDITIONAL POSTAGE  
ADD \$20.00**





## LIFTING GAME MADE SIMPLE AND EASY



One of the simplest, most economical methods of lifting game onto your ATV. Designed by a professional hunter with years of tested and proven experience. Winch pole (A) simply slides over mounting bracket (B) for easy removal and installation making transport a breeze. Locking knob (C) holds it securely in place. Game handler comes with a 1000lb capacity winch and 30 ft of cable (D). Not recommended for 3 wheelers or ATVs smaller than 300cc. Wt 21 lb. Two Styles Are Available. **HARDWARE INCLUDED.**

**For Wire Mesh Racks**

**Order # AGH-WM**

**\$89.95**

**For Tubular Racks**

**Order #AGH-T**

**\$89.95**



**Tubular Rack  
Mounting Plate**



**1000 lb Capacity  
Mounting Winch**

## TRUCK GAME HOIST

### Features:

**Offsets For More Access  
To Tailgate Area.**

**Fits:** 2" Receiver hitch

**Telescoping:** Adjust to any size truck

**Winch:** Removable lb. capacity

Winch with 3/16" cable

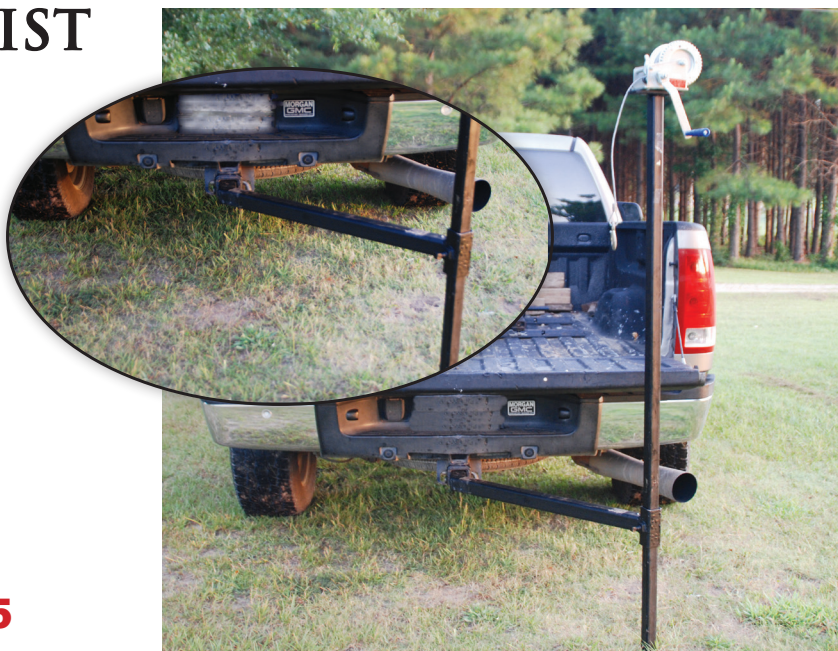
**Color:** Durable Non Glare Black

**Construction:** Heavy Square Tubing

**Wt. 40 lb**

**Order # GHT**

**\$189.95**







## 32 GALLON TRIPOD

### Features:

- 225 lb. Capacity Polyethylene Heavy Conical Bottom Barrels. These barrels will resist rust, corrosion, and they never need painting.
- Quick Release Locking Lid
- **Leg Kit:** Consist of 9-30" easy slide together sections, galvanized 1-3/8" diameter.
- **Compact:** Contents placed inside of barrel for easy handling and storage
- **Weighs:** approximately - 32 lbs.
- **Total Assembly Time:** Less than ten minutes. No special tools needed

Ships FEDEX Additional postage required.

**Order # T-KIT-LT**

**\$ 79.95**

Barrel Has 9" Flat Bottom To Adapt To Almost Any Timer



## 32 GALLON WINCH UP

### Features:

- Barrel:** 32 gallon Poly barrel with Quick Release Lid And Conical Bottom. Poly barrels resist rust corrosion and they never need painting.
- Winch:** 1200 lb. capacity. 30 ft. galvanized 3/16" aircraft style multi strand cable with safety hook. Easy Lifting
- Leg Kit:** Consist of 9-50" easy slide together Sections. Heavy galvanized 1-3/8" diameter pipe.
- Assy Time:** Less than 15 minutes. Simple Quick & Easy. Approx. Wt. 45

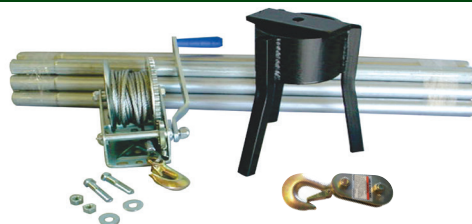
**Order # WU32-LESSTIMER \$179.95**

Barrel Has 9" Flat Bottom To Adapt To Almost Any Timer

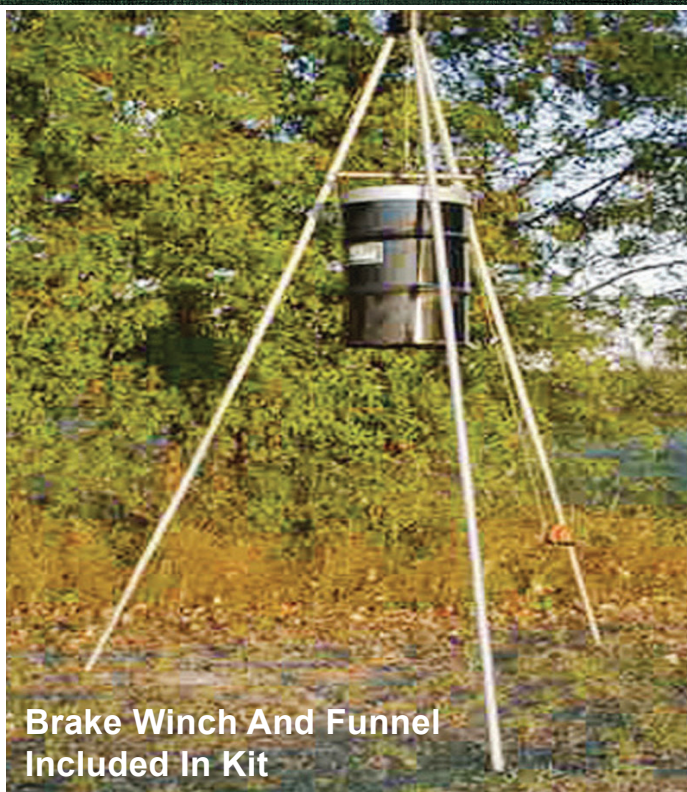
## 32 GALLON WINCH UP KIT

Includes Same Feature as Above Less Barrel.

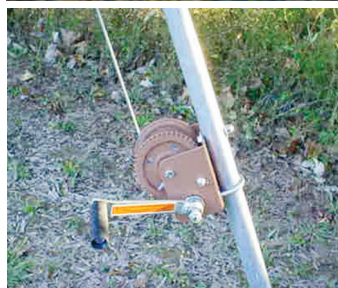
**Order # WU32-LESSB&T \$149.95**







**Brake Winch And Funnel  
Included In Kit**



## WU55 KIT

*Specify the Leg Kit of your choice.*

**Leg Kit:** Two kits available. The legs are heavy round galvanized 1-5/8" tubing with leg stakes.

**Kit # LK55-3** 3 heavy legs 13 ft. 3" X.16ga  
(Ship by LTLTruck Only).

**Kit # LK55-9** 9 legs 56" length X 16ga easy  
slide together sections  
(Ships FEDEX).

- **Barrel:** Industry standard 55 gallon metal barrel like New. Extremely clean
- **Leg Stakes:** Three 24" x 1/2" Round Drive In Rods
- **Winch:** High Quality 800 lb. Cap. With Automatic Brake and 25 ft. Galvanize 3/16" cable with Safety Hook. The Automatic Brake holds load in position when handle is released. No spinning of handle.
- **Lid:** Heavy Galvanized Seamless - Sheds Water Easily. Easy On -Easy Off
- **Internal Funnel:** Heavy Galvanized Seamless One Piece Funnel With Downspout.

**Assembly: Simple, Quick, Easy**

**No Special Tool Required**

**Ships FEDEX Additional postage required.**

**Order # WU55-LT**

**\$334.95**

## QUAD POD 55

### Features:

- **Industry standard:** 55 gallon metal barrel like New. Extremely clean
- **Lid:** Heavy galvanized seamless with 3" lip edge
- **Leg Kit:** Consist of 12 Galvanized Sections. 1-3/8" diameter X 30"
- **Pre-Drilled:** 2-1/4 Hole for timer
- **Compact:** Contents placed inside of barrel for Easy handling & storage
- **Weighs:** Approximately – 75 lbs.
- **Assembly Time:** Less than ten minutes. No Special tools needed.

**Ships FEDEX: Additional postage required**

**Order # QP55-LT**

**\$99.95**





## DELUXE HEAVY DUTY 55 GALLON WINCH UP FEEDER



*Having Hog Problems? This is the feeder for you!  
Virtually Impossible to knock over!*



T-Post's not included.

T-Post's make it  
virtually impossible  
to knock over!

800 lb Capacity Winch  
w/ Automatic Brake.

**55 Gallon Metal Barrel:** Like new, Extremely Clean.

**Leg Kit:** Legs are 12 Ft. Long with square tubing that is 3/16" thick. Leg Bases are welded on and cut to accept t-post which are drove into the ground at a slight angle to make it virtually impossible to knock over.

**Barrel Stabilizer:** Keeps barrel secure and prevents swaying in windy conditions or animal nudging. Comes with chains and clips that attach to the legs. Attached legs help keep barrel stabile when lowered while filling.

**Winch:** High Quality 800 lb Capacity w/Automatic Brake and 25 ft Galvanized 3/16 Cable and Hook. The Automatic Brake holds load in place. No Spinning of Handle

**Lid:** Heavy Seamless Galvanized with 3" Lip. Does not hold water.

**Internal Funnel:** One pc Galvanized funnel w/down spout.

**Assembly:** Quick & Easy. All Hardware and instructions are included

**This Unit Come Less Timer. You can choose a motor from the following pages and ask for combo pricing.**

**SHIPS BY FREIGHT TRUCK.**  
Call 1-800-333-9143 for  
Freight Quote.



**Order # WU55-HDLT**

**\$434.95**

**OTHER GREAT SUPPLIES ALSO AVAILABLE. GIVE US A CALL AT 1-800-333-9143**



IR - Infrared — LO - Lights Out — MP - Mega Pixels

**TERRA™  
EXTREME 10**

10 MP.  
21 High Intensity Infrared LED's.  
60 Ft. Range.

**Order # TX10i18****\$49.95****TERRA™ EXTREME 10  
LIGHTSOUT™**

10 MP.  
36 Invisible Black Infrared LED's.  
55 Ft. Range.  
Invisible Flash.

**Order # TX10B18****\$58.95****WRATH14™**

14 MP.  
28 High Intensity Infrared LED's.  
75 Ft. Range.

**Order # WR14i89****\$68.95****WRATH14™  
LIGHTSOUT™**

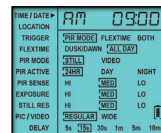
14 MP.  
40 Invisible Black Infrared LED's.  
70 Ft. Range.

**Order # WR14B89****\$77.95****MIRAGE™ 18**

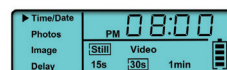
18 MP.  
36 High Intensity Infrared LED's.  
90 Ft. Range.

**Order # M18i199****\$87.95****MIRAGE™ 18  
LIGHTSOUT™**

18 MP.  
42 Invisible Black Infrared LED's.  
85 Ft. Range.

**Order # M18B199****\$97.95****RIVAL™ 20**

20 MP.  
Dual Cameras.  
42 High Intensity Infrared LED's.  
100 Ft. Range.

**Order # XC20i209****\$126.95****RIVAL™ 20  
LIGHTSOUT™**

20 MP.  
Dual Cameras.  
42 Invisible Black LED's.  
95 Ft. Range.

**Order # XC20B209****\$136.95****TRAIL PAD SWIPE VIEWER**

Game surveillance is only part of the equation. Once your cameras capture the story, you need to be able to watch the story back quickly; and now you can with just the swipe of a finger. The Trail Pad Swipe SD Card Reader allows you to review images and videos directly from your game cameras. Simply load an SD card into the Trail Pad Swipe to start viewing. You'll find files neatly organized on a bright LCD screen so you can run through all the action your cameras have seen. Instantly view photos and watch videos with a user-friendly touch screen and easy-access buttons. The touch screen even has a zoom feature so you can count every tine.

**Features:**

- Compact, lightweight design.
- Heavy-duty, water-resistant housing.
- Touch screen and push-button navigation
- Zoom in/out functionality.
- Easy-access trash button to delete unwanted videos/photos.
- Holds up to 32GB SD card.
- Auxiliary and USB ports for computer and/or TV viewing (cords not included).
- Up to 32GB SD card and 4 AAA batteries required (not included).

**Order# VU60****\$67.95**



**NEW FOR  
2019**

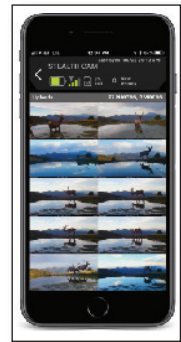
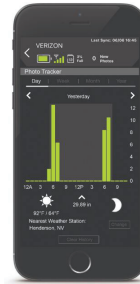


**STEALTH CAM®**  
Digital Scouting Cameras

## WIRELESS CAMERAS FOR VERIZON AND AT&T NETWORKS

Users have **complete control** of their cameras via the updated **FREE Stealth Cam Remote APP 3.0**. The app's new streamlined interface allows the user to configure all camera settings as well as manage the transmission schedule and remotely erase the memory card. **New features include Take Test Photo, providing the ability to send a command to the camera to take and transmit a photo on demand.** Enhanced location function plots cameras on Google maps within the app supplying the user a visual reference to where their cameras are placed.

These Models not only incorporates the latest in high speed modems for fast 4G/ LTE wireless image & video transmission but is also a full featured 22 Megapixel No Glo camera capable of recording high definition video with audio.



**VERIZON MODEL**  
Order # STCGXVRW

**\$279.95**

**AT&T MODEL**  
Order # STCGXATW

**\$279.95**

**WE WILL BE OFFERING THE STEALTH CAM QS SERIES, PX SERIES, G SERIES, AND THE XV SERIES AS WELL. ASK ABOUT THE COMBO PACKS WITH CARDS AND BATTERIES OR VISIT OUR WEBSITE.**

14 Megapixel / Video recording 15 seconds / 12 IR Emitters / FX Shield  
Order # QS12

**\$ 69.95**

26 Megapixel/ 45 No Glo IR Emitters/ HD Video recording 5-180 seconds with audio/ Time Lapse with PIR Override/ Multi Language  
Order # G45NGMAX

**\$189.95**



20 Megapixel/ 24 No Glo IR Emitters/ HD Video recording  
Order # PXP24NG

**\$114.95**

**OTHER GREAT SUPPLIES ALSO AVAILABLE. GIVE US A CALL AT 1-800-333-9143**



**Features:**

**Feeding Made Easy:** No Complicated Procedures. No Lengthy Instructions. You can use the self leading screen with step by step instructions to customize each individualized feeding. **Feed Settings:** 1-6 per day.

**Solar Power:** The first fully self contained Integrated Solar Power Feeder Wrap Around Solar Panel: New High Impact Panel is the Answer to long term Battery Life. No Exposed Wires or Glass Panels to Break.

**Battery Included:** 6 Volt Rechargeable.

**Adjustable Run Time:** 1-30 seconds.

**Motor:** 6 Volt High Torque with Three Speeds. You can set it for High, Medium or Low distance spreading

**Test Button:** Examines all electronic functions for correct activation. 10 second delay gives you adequate time to check your feeder without getting a face full of corn.

**Construction:** All aluminum with air tight seals

**Warranty:** Lifetime

**Order # 11114**

**\$162.95**

## ELITE

**Features:**

**Construction:** All aluminum with air tight seals.

**Feed Settings:** 1-6 per day. No complicated procedures. No lengthy instructions. Use the self leading screen with Step By Step instructions to customize each individual feeding.

**Run Time:** Adjustable 1-30 seconds Batteries: 10 AA (not included) Has Sleep Mode to save batteries.

**Test Button:** 10 second delay.

Adequate time to check your Feeder without getting corn in your face.

**Motor Speeds:** Three you can set for High, Medium Or Low to vary your spread distance.

**Warranty:** Lifetime.

**Order # 11113**

**\$118.95**

## LIFETIME CLASSIC

**Features:**

**Construction:** All aluminum with air tight seals

**Feed Settings:** 1-12 per day  
24 hour quartz clock

**Run Time:** Adjustable 3-16 seconds

**Batteries:** 11 AA (not included)

**Warranty:** Lifetime

**Order # 11112**

**\$99.95**

*And do not be conformed to this world, but be transformed by the renewing of your mind, that you may prove what is that good and acceptable and perfect will of God.*

*Romans 12:2*



## LIFETIME HASSLE FREE WARRANTY

***It's Hard To Believe How Simple It Is!***

**INSERT TWO 9 VOLT BATTERIES & WALK AWAY**

**Fast — Simple — Easy programming**

### Features:

**Construction:** All Aluminum Housing.

**Run Time:** Pre-set 8 seconds. Feeds at 7 am and 4 pm. Broadcast up to 40 feet, approximately one pound of corn per feeding. Easy Feeder Funnel Adjusting.

**Universal Mounting:** Fits most hoppers.

**Order # 11117**

**\$62.95**

### ***What are customers saying?***

- I can't believe how simple it is!
- It's small but powerful.
- Feeds at a great time!
- No pins, no clips to lose, no settings, my buddy can't change the setting.



## OPTIONAL ACCESSORIES



### **TWO YEAR BATTERY PACK**

Can Power unit up to 2 Years.

Requires 4-AA Lithium batteries (not included)

**Order # 77711**

**\$13.95**



### **DIGITAL KEY PROGRAMMER**

Allows you to program up to 6 feedings per day with a run time of 1-30 seconds per feeding.

**With Test Key:** This allows you to pre-run your feeder to determine the amount of feed you are putting out.

**Order # 46007**

**\$17.95**





## TOMAHAWK VL TRIPOD FEEDER

### 150 lb Capacity

Features a TOMAHAWK VL Timer, 25 Gallon Poly Barrel with Legs and Standard Barrel Ring

**Order # T-42200** **\$109.95**  
 Ships FEDEX. Additional postage required.



## TOMAHAWK VL TIMER

- 1 TO 4 feedings per day.
- Built in test button.
- Broadcast up to 50 feet.
- Fits any barrel.
- Can be used as 6 OR 12 Volt operation.
- Built for maximum battery life.

**Order # 49000** **\$51.95**



## OPTIONAL SOLAR PANEL

For use with  
6 Volt Operations

**Order # 42400** **\$23.95**

## TOMAHAWK VL HANGING FEEDER

### 150 lb Capacity

#### Features:

- TOMAHAWK VL Timer
- 25 Gallon Poly Barrel w/Hanger

**Order # H-42100** **\$94.95**  
 Ships FEDEX.  
 Additional postage required.

See Our Feeder Accessories Section  
For Mounting Options.







## ULTRA HUNT Versatile Unique Features

**Add The Optional Control Key \*46007\* For More Programming Options**

**Dawn-Dusk Mode:** Easy adjustment for the amount of sunlight needed to activate

**Hunt Mode:** Can supply up to 20 short burst of 2 second feedings per day during day light hours, every half hour.

**Optional Digital Control Key:** Allows you to self program unit to your desired settings.

**Order # 43005**

**\$41.95**

## ON TIME FEEDER REPLACEMENT PARTS

### REPLACEMENT DIGITAL MODULE ASSEMBLY

Replacement Modules For Ontime Units. Convert your Lifetime Timer to the Elite. So Simple — No Instructions Needed — Simple easy, quick installation. Module simply slides out of aluminum housing.

**See features of the Elite Timer pg. 20.** Uses 10 AA batteries- not included.

**Elite Model — Order # 00503**

**\$66.95**

**Solar Elite Model — Order # 00503-S**

**\$76.95**

**ONTIME DIGITAL REPLACEMENT TIMER ONLY**

With 9 Volt Style Snap Clip.

**Order # DRT00503**

**\$39.95**



- James 4:8

Draw near to God, and he will draw near to you.



### LIFE TIME CLASSIC MODULE ASSEMBLY

Fits all On Time Timers with the Aluminum Housings. Slide Out- Slide In. Complete with clock, dial, clips and rheostat. **See features of the Lifetime Timer, pg. 20.**

Uses 11 AA batteries- not included.

**Order # 00202**

**\$41.95**

### TOMAHAWK REPAIR PARTS CONTROL BOARDS

A - Value line Board

**Order # 49000-Board \$28.95**

B - Ultra Hunt Board

**Order # 43005-Board \$23.95**

C -Lid Motor Assembly - Ultra Hunt

**Order # 00254 \$13.95**

D - Value Line Motor w/Wire

**Order # 49000MOTOR \$ 9.95**



A



B



D





## TRIPOD

225 lb. Capacity polyethylene heavy barrel. Poly barrels with conical bottom resist rust, corrosion, they never need painting.

Quick Release Locking Lid.

**Leg Kit:** Consist of 9-30" easy slide together sections, galvanized 1-3/8" diam.

**Compact:** Contents placed inside of barrel for easy handling and storage.

**Weighs:** approximately - 32 lb.

**Height:** 9 ft. 2 in.

**Total Assembly Time:** Less than ten minutes  
No special tools needed.

### SELECT THE FEEDER OF YOUR CHOICE

Feeder Description	Order #	Price
C-74	T-11117	<b>\$141.95</b>
Lifetime Classic	T-11112	<b>\$179.95</b>
Elite	T-11113	<b>\$199.95</b>
Solar Elite	T-11114	<b>\$246.95</b>
Tomahawk Digital	T-49000	<b>\$129.95</b>
Tomahawk Ultra Hunt	T-43005	<b>\$119.95</b>



**Ships Fedex - Additional Postage Required**  
 • Varmint Guard Not Included  
**See pg 20 & 21 For OnTime Timers**

## QUAD POD

**Industry standard:** 55 gallon metal barrel like New. Extremely clean. Holds 350 lbs.

**Lid:** Heavy galvanized seamless with 3" lip edge

**Leg Kit:** Consist of 12 Galvanized Sections. 1-3/8" diameter X 30"

**Pre-Drilled:** 2-1/4 Hole for timer

**Compact:** Contents placed inside of barrel for Easy handling & storage

**Weighs:** Approximately - 75 lbs.

**Assembly Time:** Less than ten minutes. No Special tools needed.

### SELECT THE FEEDER OF YOUR CHOICE

Feeder Description	Order #	Price
C-74	QP55-11117	<b>\$159.95</b>
Lifetime Classic	QP55-11112	<b>\$198.95</b>
Elite	QP55-11113	<b>\$218.95</b>
Solar Elite	QP55-11114	<b>\$265.95</b>
Tomahawk Digital	T-49000	<b>\$147.95</b>
Tomahawk Ultra Hunt	QP55-43005	<b>\$137.95</b>



**Ships Fedex - Additional Postage Required**  
**See pgs 20-23 For OnTime Timers**





**225 lb. Capacity**

See pg 20 & 21 For OnTime Timers

## Features:

**Polyethylene Barrel:** resist rust corrosion, never need painting.  
Conical Bottom

**Lid:** Quick Release Locking

**Contents:** placed inside of barrel for easy handling & storage

**Barrel:** weighs approximately 17 lbs

**Total assembly:** less than 5 minutes - No special tools needed

**SHIPS FEDEX - Additional postage required.**

## SELECT THE FEEDER OF YOUR CHOICE

Feeder Description	Order #	Price
<b>C-74</b>	H-11117	<b>\$115.95</b>
<b>Lifetime Classic</b>	H-11112	<b>\$153.95</b>
<b>Elite</b>	H-11113	<b>\$174.95</b>
<b>Solar Elite</b>	H-11114	<b>\$220.95</b>
<b>Tomahawk Digital</b>	H-49000	<b>\$102.95</b>
<b>Tomahawk Ultra Hunt</b>	H-43005	<b>\$92.95</b>

# WINCH-UP FEEDERS

**Barrel:** 32 gallon Poly barrel with Quick Release Lid. Poly barrels resist rust corrosion they never need painting. Conical Shape to Empty Barrel

**Winch:** 1200 lb. capacity. 30 ft. galvanized 3/16" aircraft style multi strand cable with safety hook. Easy Lifting.

**Leg Kit:** Consist of 9-50" easy slide together Sections. Heavy galvanized 1-3/8" diameter pipe.

**Assembly Time:** Less than 15 minutes.  
Simple Quick & Easy. Approx. wt. 45



**225 lb. Capacity**

Filling made Easy. No More Standing in Trucks, on ATV's or Climbing ladders.  
Overall Height 12 ft. 4"

Ships FEDEX - Additional postage required

See pg 20 & 21 For OnTime Timers

## SELECT THE FEEDER OF YOUR CHOICE

Feeder Description	Order #	Price
<b>C-74</b>	WU32-11117	<b>\$244.95</b>
<b>Lifetime Classic</b>	WU32-11112	<b>\$282.95</b>
<b>Elite</b>	WU32-11113	<b>\$303.95</b>
<b>Solar Elite</b>	WU32-11114	<b>\$349.95</b>
<b>Tomahawk Digital</b>	WU32-49000	<b>\$232.95</b>
<b>Tomahawk Ultra Hunt</b>	WU32-43005	<b>\$222.95</b>



## Check Out These Features!

*Specify the Leg Kit of your choice.*

**Leg Kit:** Two kits available. The legs are heavy round galvanized 1-5/8" X .065" tubing with leg stakes.

**Kit # LK55-3** 3 heavy legs 13 ft. 3" x 16ga  
(Ship by LTL Truck Only).

**Kit # LK55-9** 9 legs 56" length x 16ga easy  
slide together sections  
(Ships FEDEX).

- **Barrel:** Industry standard 55 gallon metal barrel like New. Extremely clean
- **Leg Stakes:** Three 24" x 1/2" Round Drive In Rods
- **Winch:** High Quality 800 lb. Cap. With Automatic Brake and 25 ft. Galvanize 3/16" cable with Safety Hook. The Automatic Brake holds load in position when handle is released. No spinning of handle.
- **Lid:** Heavy Galvanized Seamless - Sheds Water Easily. Easy On - Easy Off
- **Internal Funnel:** Heavy Galvanized Seamless One Piece Funnel With Downspout.
- **Assembly:** Simple, Quick, Easy. No Special Tool Required



**350 lb. Capacity**

See On Time Section For Timer Features

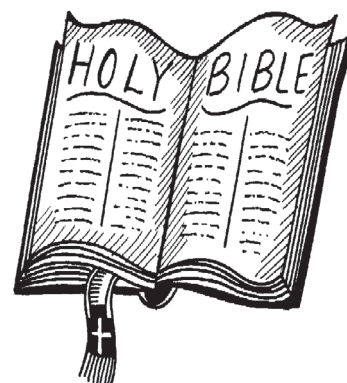
## SELECT THE FEEDER OF YOUR CHOICE

Feeder Description	Order #	Price
C-74	WU55-11117	\$399.95
Lifetime Classic	WU55-11112	\$439.95
Elite	WU55-11113	\$459.95
Solar Elite	WU55-11114	\$499.95
Tomahawk Digital	WU55-49000	\$389.95
Tomahawk Ultra Hunt	WU55-43005	\$379.95



**Having Hog Problems!**  
**Start hanging your feeders!**

See pages 24, 27, 32, 35, 41..



*We then who are strong ought to  
 bear the infirmities of the weak  
 and not please ourselves.*

- Romans 15:1

**And those who are Christ's have crucified the flesh with its passions and desires.  
 If we live in the spirit, let us also walk in the spirit. - Galatians 5:24-25**



## MOUNTING FUNNEL All Aluminum



Welded Construction  
Fits all ON-TIME Timers.

# 00101 **\$19.95**  
**\*\*Not for Tomahawk VL\*\***

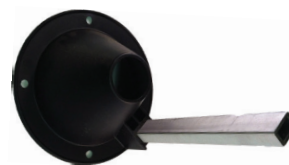
## MOUNTING FUNNEL Poly w/Aluminum Shaft



Fits all ON-TIME Timers.

# 00101-P **\$12.95**  
**\*\*Not for Tomahawk VL\*\***

## MOUNTING FUNNEL Poly w/Rectangle Aluminum Shaft



For Tomahawk VL Models Only

# 00101-PVL **\$12.95**

## CLOCK CLIPS



Pack of 5  
Standard clock clips  
For On Time Timers

# 00213 **\$2.95**

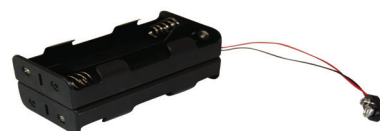
## HANDY KIT



Consists of 2 set screws,  
2 clock clips,  
3 hex tools For Old & New  
Style Spin Plates

# OTHK **\$3.95**

## ELITE BATTERY PACK



Two year battery pack: Holds 8  
C- Cell batteries. Easy, Quick, Simple  
installation with instructions.  
Extends battery life up to two years.

# 00208 **\$13.95**

## AA BATTERY PACK



Holds 10 AA Batteries

# 08780 **\$4.95**

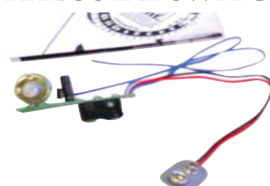
## LID MOTOR ASSEMBLY



Spin Plate Assembly: Complete  
spin plate with motor & wires.  
Simple Installation.  
With instructions.

# 00103-ASSY **\$13.95**

## RHEOSTAT SWITCH



Complete with wires - no soldering  
needed. Adjust your motor  
Run Time from 3-16 seconds.

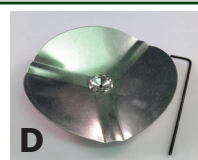
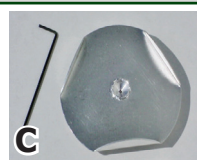
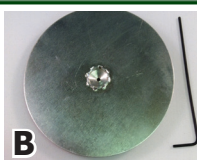
# 00204-R **\$13.95**

## ANALOG CLOCK



Clock with Dial: Complete with  
dial and clock clips. Holds one  
AA battery. Not Included.

# 00204 **\$13.95**



## SPIN PLATES

A: Throws corn 60 - 70 ft. # 00103-WR

B: Direct Drop Drops feed under feeder # 00103-DD

C: Standard triangle plate # 00103

D: Windproof. Used where wind is a problem. # 00103-WP

**\$5.95**





## HEAVY DUTY DIGITAL SPIN FEEDER

### Features:

- Power Indicator
- All Metal Construction
- Program Memory Settings
- 3 Speed motor
- 1-8 Feed Times A Day
- Can Feed Various Days Of The Week
- Adjustable Feed Rate From 1-30 sec
- 6 or 12 Volt Operation
- Fits A Variety Of Barrels
- Comes With Powder Coated No Blow Spin Plate.
- No More Wind Problems



**Order # FMK6/12**

**\$87.95**

### RD-KIT DIGITAL SETTINGS



**Feed Settings:** 1 to 16 times Per Day

**Run Time:** 1 to 30 Seconds

**Feed Dispersing:** Adjustable to feed different days of the week at different times or same days same times

**Batteries:** One 6 volt Lantern Style Battery (Not Included) **Order # DE650S**

**Varmint Guard:** Standard Built In

**Fits:** Most any container

**Order # RD-KIT**

**\$49.95**



### R-KIT ANALOG CLOCK



**Feed Settings:** 1 to 24 times per day

**Run Time:** Adjustable 2 to 30 seconds

**Feed Dispersing:** Adjustable

**Batteries:** One 6 volt Lantern Style Battery (Not Included) **Order # DE650S**, One AA for clock (included)

**Varmint Guard:** Standard Built In

**Fits:** Most any container

**Order # R-KIT**

**\$36.95**

### PHOTOCELL E-KIT

**Motor:** High Torque

**Feed Dispersing:** Feeds at daylight and up to 12 hours with an adjustable rate of 1 and 30 seconds.

**Batteries:** One 6 volt Battery (Not Included) **Order # DE650S**

**Fits:** Most any container

**Order # E-KIT**

**\$24.95**



### VARMINT BUSTER FOR R-KITS

**Order # BL-VB1**

**\$19.95**

### SOLAR CHARGER FOR R-KITS

**Order # BL-R680S**

**\$23.95**

See Page 32  
for Full Description





## TRIPOD FEEDERS

**Barrel:** Heavy 225 lb capacity Conical Poly Barrel w/Quick Release Locking Lid and UV Protection.

**Leg Kit:** 9-30" slide together sections.  
1-3/8 X .035 in diameter.

**Height:** 9 ft 2 in

**Ships:** FEDEX. Additional postage required.



Feeder Description	Order #	Price
6 Volt Analog R-KIT	T-RKIT	<b>\$113.95</b>
6 Volt Digital RD-KIT	T-RDKIT	<b>\$128.95</b>
6/12 Volt Digital Spin	T-FMK6/12	<b>\$166.95</b>
6 Volt Photo Cell	T-EKIT	<b>\$ 97.95</b>

## 225 LB. WINCH UP FEEDERS

**Barrel:** Heavy 225 lb capacity Conical Poly Barrel w/Quick Release Locking Lid and UV Protection

**Winch:** 1200 lb capacity, 30 ft 3/16 cable with hook.

**Leg Kit:** 9-50" Slide together sections  
1-3/8 X .065 diameter pipe.

**Height:** 12ft 4in

**Ships:** FEDEX Additional postage required.



Feeder Description	Order #	Price
6 Volt Analog R-KIT	WU32-RKIT	<b>\$215.95</b>
6 Volt Digital RD-KIT	WU32-RDKIT	<b>\$231.95</b>
6/12 Volt Digital Spin	WU32-FMK6/12	<b>\$269.95</b>
6 Volt Photo Cell	WU32-EKIT	<b>\$199.95</b>





## HANGING



**Barrel:** Heavy 225 lb capacity Conical Poly Barrel w/Quick Release Locking Lid.

**Hanger:** Designed So that lid can be removed without letting completely down.

**Ships:** FEDEX. Additional postage required.

Feeder Description	Order #	Price
6 Volt Analog R-KIT	H-RKIT	\$ 87.95
6 Volt Digital RD-KIT	H-RDKIT	\$102.95
6/12 Volt Digital Spin	H-FMK6/12	\$140.95
6 Volt Photo Cell	H-EKIT	\$ 72.95



**50 LB  
CAPACITY  
METAL-CAMO**

**Comes with  
R-KIT.**

**Order # H-R50  
\$54.95**

*Through wisdom a house is built, and  
by understanding it is established; by  
knowledge the rooms are filled with all  
precious and pleasant riches.*

*- Proverbs: 24:3-4*

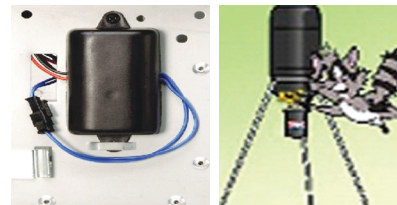
*Talent is GOD given — be humble.  
Fame is man given — be thoughtful.  
Conceit is self given — be careful.*

## VARMINT BUSTER

The Zapper gives your unwanted smaller Visitors a non-lethal shock. Mounts inside

The housing and connects straight to the main battery. A two minute Simple - Quick installation.

**Order # BL-VB1 \$19.95**



## SOLAR CHARGER

No Exposed Wires.

Converts sunlight into electric power.

Keeps your battery charged.

Maintenance free, Weather & rust proof. Corrosive resistant.

**Order # BL-R680S  
\$23.95**







## DELUXE 55 GALLON WINCH UP FEEDER

### 325 Pound Capacity

**Barrel:** Industry Standard 55 Gallon Metal Like new, Extremely Clean

**Leg Kit: Two Kits Available** . Legs are heavy round galvanized 1-5/8" X 0.065 with leg stakes.

**LK55-3:** 3 pc set. 13 ft long. X 16 ga

(Each Leg is 1 Piece)(Must be shipped freight truck)

**LK55-9:** 9 pc slide together set. Each piece is 56" long X 16 ga (Ships FEDEX w/additional handling of \$25.00)

**Leg Stakes:** 3 pc 24" x 1/2" Round Drive In Rods

**Winch:** High Quality 800 lb Capacity w/Automatic Brake and 25 ft Galvanized 3/16 Cable and Hook. The Automatic Brake holds load in place.

No Spinning of Handle

**Lid:** Heavy Seamless Galvanized. Does not hold water. Easy On, Easy Off

**Internal Funnel:** One pc Galvanized funnel w/down spout.

**Assembly:** Simple, Quick & Easy. All Hardware and instructions are included



Feeder Description	Order #	Price
6 Volt Analog R-KIT	WU55-RKIT	\$374.95
6 Volt Digital RD-KIT	WU55-RDKIT	\$389.95
6/12 Volt Digital Spin	WU55-FMK6/12	\$424.95

*Rejoice always, pray without ceasing, in everything give thanks; for this is the will of God in Christ Jesus for you.*  
— 1 Thessalonians 5:16-18

## 350 POUND CAPACITY QUAD POD

Four Legs Make For Great Stability

**Barrel:** 55 Gallon Metal Barrel Like new, Extremely Clean.

**Lid:** Heavy Seamless Galvanized. Does not hold water. Easy On, Easy Off.

**Leg Kit:** Consist of 12 galvanized 1-3/8 diameter x 30" slide together sections.

**Assembly Time:** Less than 10 Minutes.

No Special Tools Required

**Internal Funnel:** Not Included.

**Ships:** FEDEX Additional postage required

Feeder Description	Order #	Price
6 Volt Analog R-KIT	QP55-RKIT	\$132.95
6 Volt Digital RD-KIT	QP55-RDKIT	\$147.95
6/12 Volt Digital Spin	QP55-FMK6/12	\$184.95



OTHER GREAT SUPPLIES ALSO AVAILABLE. GIVE US A CALL AT 1-800-333-9143





## 12 VOLT DIGITAL POWER CONTROL UNIT

### Features:

12 Volt battery operation | Digital electronics  
6 available feed times per day | Feed time durations from 1 to 30 seconds  
Stainless steel gated spinner plate | 4 Year Warranty

**Order # TH-12VDX**

**\$82.95**



## 6 VOLT DIGITAL POWER CONTROL UNIT

### Features:

6 Volt battery operation | Digital electronics  
4 available feed times per day | Feed time durations from 1 to 30 seconds  
Aluminum Spin Plate | 4 Year Warranty

**Order # TH-6VDX**

**\$49.95**

## 6 VOLT QUARTZ POWER CONTROL UNIT

### Features:

6 Volt battery operation | 24 available feed times per day  
Adjustable feed time durations from 1 to 20 seconds  
Easy to adjust duration control knob  
Large, custom-molded clock-trip pins (10 included)  
Aluminum Spin Plate | 4 Year Warranty

**Order # TH-6VA**

**\$54.95**



## 6 VOLT PHOTO CELL POWER CONTROL UNIT

### Features:

6 Volt battery operation | 2 available feed times per day  
Adjustable feed time durations from 1 to 30 seconds  
LED indicator for motor current test | Large stand alone "test" button  
Rugged photocell eye attached to wire lead for ease of use | 4 Year Warranty

**Order # TH-6VP**

**\$34.95**

## WILDGAME INNOVATION PARTS

### REPLACEMENT MOTORS

6 Volt Motor  
**Order # 6VM**



**\$9.95**

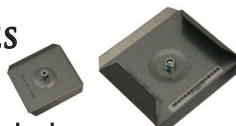
12 Volt Motor  
**Order # 12VM**



**\$28.95**

### SPIN PLATES

1/8" Shaft - Galvanized  
**Order # 6VSP**



**\$5.95**

1/4" Shaft - Galvanized  
**Order # 12VPS**



**\$6.95**

### DIGITAL MODULE

Digital control unit fits most timers.  
**Order # THDT**

**\$32.95**



### DROP FUNNEL

2" Drop Funnel made of Poly Material. Fits most timers.  
**Order # DFI**

**\$4.95**







## TRIPOD

- Barrel:** Heavy 225 lb capacity  
Conical Poly Barrel w/Quick  
Release Locking Lid.
- Leg Kit:** 9-30" slide together sections.  
1-3/8 in X .035 Diameter
- Height:** 9 ft 2in.
- Ships:** FEDEX. Additional postage  
required.



Feeder Description	Order #	Price
6 Volt Photo Cell	T-TH6VP	<b>\$111.95</b>
6 Volt Analog	T-TH6VA	<b>\$134.95</b>
6 Volt Digital	T-TH6VDX	<b>\$126.95</b>
12 Volt Digital	T-TH12VDX	<b>\$163.95</b>

## HANGING

- Barrel:** Heavy 225 lb capacity Conical Poly  
Barrel w/Quick Release Locking Lid.
- Hanger:** Designed so that lid can be removed  
without letting completely down.
- Ships:** FEDEX. Additional postage required.



Feeder Description	Order #	Price
6 Volt Photo Cell	H-TH6VP	<b>\$86.95</b>
6 Volt Analog	H-TH6VA	<b>\$108.95</b>
6 Volt Digital	H-TH6VDX	<b>\$99.95</b>
12 Volt Digital	H-TH12VDX	<b>\$136.95</b>

The end of a matter is better than its beginning, And the patient  
in spirit is better than the proud in spirit.

— Ecclesiastes 7:8





## DELUXE 55 GALLON WINCH UP FEEDER

### 325 Pound Capacity

**55 Gallon Metal Barrel:** Like new, Extremely Clean

**Leg Kit: *Two Kits Available.*** Legs are heavy round galvanized 1-5/8" X .065 with leg stakes.

**LK55 - 3:** 3 pc set. 13 ft long x 16ga (Each Leg is 1 Piece)  
(Must be shipped freight truck)

**LK55 - 9:** 9 pc slide together set. Each piece is 56" long x 16ga (Ships FEDEX w/additional handling of \$25.00)

**Leg Stakes:** 3 pc 24" x 1/2" Round Drive In Rods

**Winch:** High Quality 800 lb Capacity w/Automatic Brake and 25 ft Galvanized 3/16 Cable and Hook. The Automatic Brake holds load in place. No Spinning of Handle

**Lid:** Heavy Seamless Galvanized. Does not hold water.

**Internal Funnel:** One pc Galvanized funnel w/down spout.

**Assembly:** Simple, Quick & Easy.

All Hardware and instructions are included



*We are of God. He who knows God hears us: he who is not of God does not hear us. By this we know the spirit of truth and the spirit of error.*

*1 John 4:6*

Feeder Description	Order #	Price
6 Volt Photo Cell	WU55-TH6VP	<b>\$372.95</b>
6 Volt Analog	WU55-TH6VA	<b>\$394.95</b>
6 Volt Digital	WU55-TH6VDX	<b>\$386.95</b>
12 Volt Digital	WU55-TH12VDX	<b>\$421.95</b>



## WINCH UP 32 GALLON

**Barrel:** Same as Tripod

**Winch:** 1200 lb capacity, 30 ft 3/16 cable with hook

**Leg Kit:** 9-50" Slide together sections Heavy Galvanized 1-3/8 X .065 diameter pipe

**Height:** 12ft 4in

**Ships:** FEDEX Additional postage required.

Feeder Description	Order #	Price
6 Volt Photo Cell	WU32-TH6VP	<b>\$214.95</b>
6 Volt Analog	WU32-TH6VA	<b>\$237.95</b>
6 Volt Digital	WU32-TH6VDX	<b>\$229.95</b>
12 Volt Digital	WU32-TH12VDX	<b>\$266.95</b>





## DELUXE 55 GALLON QUAD POD FEEDER

**325 Pound Capacity**

- Metal Barrel:** Industry Standard 55 Gallon. Like new, Extremely Clean
- Lid:** Heavy Seamless Galvanized. Does not hold water. Easy On, Easy Off
- Leg Kit:** Consist of 12 galvanized 1-3/8 diameter x 30" slide together sections.
- Assembly Time:** Less than 10 Minutes. No Special Tools Required
- Internal Funnel:** Not Included. See below for funnel.



Feeder Description	Order #	Price
6 Volt Photo Cell	QP55-TH6VP	<b>\$128.95</b>
6 Volt Analog	QP55-TH6VA	<b>\$151.95</b>
6 Volt Digital	QP55-TH6VDX	<b>\$143.95</b>
12 Volt Digital	QP55-TH12VDX	<b>\$180.95</b>

## INTERNAL FUNNEL



Centers easily with Downspout. Fits standard **55 gallon** Drum. Heavy galvanized Seamless One piece with Downspout Allows complete emptying of your feed.

**Order # IF55     \$23.95**



**He who walks with the wise grows with the wise,  
but a companion of fools suffers harm.**

**— Proverbs 3:20**



## THE MOST VERSATILE AND USER-FRIENDLY FEEDERS ON THE MARKET

The Boss Buck Roto Molded Hoppers Are Made of Thick Wall HDPE UV Protected Plastic that will not Rust, Rot or Leak.

The double walled Hatch LID tops this unit off in style, and function. Built oversized, this lid allows the hopper system to breath, thus eliminating condensation while achieving ambient temperature faster than Steel or Fiberglass feeders.

These units come in 4 sizes and you can get it with the Free Flow Gravity Head, 12 Volt timer Motor or the Combination of Both. All Combos Come With Round Legs.

### BOSS BUCK

### 200 LB CAPACITY FEEDERS

Comes With Protein Feeder Head or Motor, Round Legs (Hopper Dimensions 29" x 25" x 25").

Feeder Description	Order #	Price
3 Way Protein Head	BB200P	\$249.95
12 Volt Motor	BB200M	\$339.95
Combo Pack	BB200C	\$349.95

### BOSS BUCK

### 350 LB CAPACITY FEEDERS

Comes With Protein Feeder Head or Motor  
One Piece Square Legs  
(Hopper Dimensions 34" x 32" x 35").

Feeder Description	Order #	Price
3 Way Protein Head	BB350P	\$324.95
12 Volt Motor	BB350M	\$449.95
Combo Pack	BB350C	\$559.95







## BOSS BUCK 600 LB CAPACITY FEEDERS

Comes With Protein Feeder  
Head or Motor One Piece  
Square Legs

(Hopper Dimensions 44" x 44" x 43").

Feeder Description	Order #	Price
4 Way Protein Head	BB600P	<b>\$589.95</b>
12 Volt Motor	BB600M	<b>\$639.95</b>
Combo Pack	BB600C	<b>\$709.95</b>

Visit Our Web Site for Other Models and  
Information Including the All-In-Series  
with the 2-in-1 Round Leg System and the "Texas  
Two Step" Combo Packs for Feeding Year Round.

All the "Texas Two Step" Combo Packs come with the  
2-in-1 Round Leg System For Adapting from Protein to  
12 Volt System with the exception of the BB1200 Units  
which all come with Square Legs.

## BOSS BUCK 1200 LB CAPACITY FEEDERS

Comes With Protein Feeder Head or Motor  
One Piece Square Legs  
(Hopper Dimensions 43.5" x 43.5" x 61")

Feeder Description	Order #	Price
4 Way Protein Head	BB1200P	<b>\$799.95</b>
12 Volt Motor	BB1200M	<b>\$899.95</b>
Combo Pack	BB1200C	<b>\$969.95</b>







IF YOU ARE WILLING AND OBEDIENT, YOU SHALL EAT THE GOOD OF THE LAND. - ISAIAH 1:19



## AUTO FEED KIT

- 12 VOLT HIGH TORQUE MOTOR with Simple Set Digital Timer.
- Steel Control box with timer holder
- Steel mounting plate & conversion funnel
- Heavy duty 5" steel swing door slinger
- Uses 12v 7ah Battery Sold Separately
- Feed flow and distance control
- 2 Year Warranty
- Converts BB gravity feeders into automatic corn feeders

Order # BBTCK

**\$139.95**

## 3 WAY GRAVITY FEED HEAD

- Feed tubes have 10° Angle
- Feed tubes have 1" overlap on top of each Port
- Feed ports are 10" long and 4" I.D.
- Each Port has a drain hole

Order # BBGH3WAY

**\$59.95**

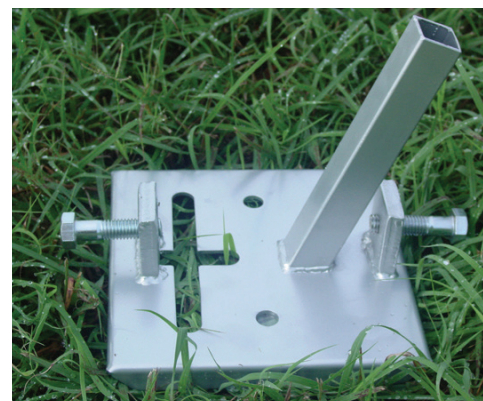


## 4 WAY GRAVITY FEEDER HEAD

- Feed tubes have 10° Angle
- Feed tubes have 1" overlap on top of each Port
- Feed ports are 8" long and 4" I.D.
- Each Port has a drain hole

Order # BBGH4WAY

**\$63.95**



## HEAVY DUTY FOOT PAD

Feet are designed to accept a T-Post through the center of the foot. The feet are large 7" square steel plates. Each foot has a large nut welded to it and a 1/2" bolt that when tightened secures the feeder to the T-Post. This will not only protect the feeder but keep it level and immobile. Feet will receive any pipe or tubing with an I.D. of 1.25" or larger. The Square tubing on the Deluxe feet is 7/8" square tubing.

Order # FPHD

**\$13.95**





## THE PORTABLE LIMB

Light weight, strong and extremely portable!  
Attach it to almost any tree for the perfect hanger for your deer feeder. Or use it to hang your game animal for processing.  
All welded construction insures years of worry free use!

- New unique method for hanging your deer feeder.
- Any tree becomes a great place to process game animals.
- Keeps your feeder away from hogs and bears.
- Great around camp as a utility hanger.
- Rated to handle up to 250 lbs.
- Adjustable bottom brace allows for trees that aren't completely straight.
- Safety strap for bottom brace included.

**Add a good quality pulley hoist system or winch mount bracket to easily elevate your feeder or game.**

**\* Includes all Mounting Hardware**

**Order # LIMB250-LP**

**\$99.95**

**Note:** Always lift in direct line with Limb.

## WINCH MOUNT BRACKET

Hang your Feeder from any large limb. Use a good quality pulley (not included), run cable through the pulley, and your ready to go. Easily mounts to any tree. Comes with or without winch. Both Units Come With Mounting Hardware, Including Straps and Chain.

**Bracket, Less Winch**

**Order # CWB-LW**

**\$41.95**

**Bracket, With 1200 lb Capacity Winch**

**Order # CWB-5204**

**\$66.95**

**Note:** Do not mount on tree directly below feeder.  
Always Lift In Line With Winch



### DRUM LID

Fits 32 Gallon Barrels up to 18" in diameter.

One piece Galvanized

**# DC30**



**\$24.95**

### BRAKE WINCH

**800 lb** Capacity Brake.

No Cable.

Holds load secure.

**# DLB800A**

**\$71.95**

See pg 44 for Winch Cables.



### 2000 LB. PULLEY

Easy to Install

Single Sheave with Hook

Use up to 3/16" cable.

**# P2000-Pul**

**\$11.95**







Providing a Constant Supply of Feed 24 Hours A Day Allows The Deer to Feed Whenever They Desire

## 225 LB CAPACITY — 100% DEPENDABLE

### NO TIMERS — NO BATTERIES

**Barrel:** 32 gallon poly, with Quick Release locking lid. Poly barrels resist rust, corrosion- never need painting. New Conical Bottom.

**Height:** 82"

**Leg Kit:** Consist of 6-30" galvanized 1-3/8 pipe- easy slide together sections.

**Down Pipe:** Heavy duty PVC schedule# 40, 17" Long

**Feed Plate:** Galvanized 18 Gauge Special Perforated. Prevents water from standing On the feed plate or being wicked up in the down pipe. **No Assembly Required.**

**Compact:** Simple — Quick — Easy Assembly Contents packed inside of barrel for Easy handling and storage.

**Ships:** FED-EX. Additional postage required.

*Also doubles as a Bird Feeder or Pet Feeder. Just remove lower leg sections and seed plate is 6" from ground.*

**Order # GF32T**

**\$89.95**



**Also Great  
For Yard  
Animals!**

### GRAVITY FLOW FEED PLATE ASSY.

#### ASSEMBLED - FREE CHOICE

Galvanized 18 gauge special Perforated plate. Prevents Water from standing on the Feed Plate or being wicked up In the down pipe. Down pipe Construction is of Heavy Duty 4" schedule 40 PVC pipe. Height 17".



**Order # GFFP- ASSY.**

**\$39.95**

### FOOT PAD KIT

Simply insert into the bottom of your feeder leg and stake down. See pg. 48 for Stakes # LS.



**Fits 1-3/8 Legs.**

**Order # FP1**

**\$13.95**

### METAL BARREL LIDS



Sheds Water- EZ on EZ off. Prevents Squirrels from Robbing your feed. Nice 2" Lip edge, galvanized, seamless. Fits all Poly Barrels 17-3/4".

**Order # DC30**

**\$24.99**

*We then who are strong ought to bear the infirmities  
of the weak and not please ourselves.*

— Romans 15:1





## 325 LB CAPACITY — 100% DEPENDABLE



**325 lb. Capacity**

**Barrel:** 55 gallon. Extra clean. Like New

**Leg Kit:** Consist of 8 - 30" galvanized  
1-3/8" OD pipe - easy slide together sections

**Down Pipe:** Heavy duty PVC schedule # 40

**Feed Plate:** Galvanized 18 Gauge Special Perforated Feed Plate  
Prevents water from standing on the Feed plate or being wicked up in  
the Down Pipe. No Assembly Required.

**Heavy Drum Cover:** Seamless, with extra wide lip edge, galvanized.

**Internal Funnel:** Heavy seamless one piece with downspout. Allows  
complete emptying of your feed.

**Ships:** FED-EX. Additional postage required.

**KIT ONLY**

INCLUDES ALL  
EXCEPT BARREL

**\$114.95\***

# GF55T-KIT  
Ships FEDEX

\*Additional Postage  
Required add \$10.00

**Order # GF55T**

**\$139.95**

## ON TIME TURKEY AND BUCKEYE FEEDER

**100% Dependable | Gravity Flow System | No Batteries To Contend With**

- 200 lb Capacity
- 2" Legs are Specially Designed
- So Feed Flows Through and Onto Feed Trays.
- Trays have multiple holes for drainage .

*Great for  
Turkey  
and Deer!*



### Internal Funnel Included

Funnel Directs Feed Straight into Legs so there is no waste.

**Assembly:** Minor assembly required. No special tools needed.

**Barrel:** Poly Barrel with Snap On Lid 200 lb Capacity

**Ships:** FEDEX- Additional Postage required.

### Two Models Available

Turkey Feeder 46" Tall

**Order # TF-45021**

**\$134.95**

Buckeye Feeder 60" Tall

**Order # BF-71540**

**\$134.95**

### Replacement Lid

Snaps on for easy  
installation

Fits other ON TIME  
Feeders Also.

**Order # 0060-SNAPON**

**\$9.99**



**OTHER GREAT SUPPLIES ALSO AVAILABLE. GIVE US A CALL AT 1-800-333-9143**



# THE BRAN BAG™ FEEDER

Light Weight Flexible Material — UV Resistant  
Compact and Easy To Store



*WORKS WELL WITH ANY TYPE BRAN FEEDS*

**THE BRAN BAG™ FEEDER** works by using a soft UV material for its walls instead of hard plastic or metal. The soft wall design allows the feed to flow freely once the deer pushes or nudges the walls. **No more moisture problems.** The unique design enables deer to nudge bag for more feed and reduces Bran waste. **Capacity:** 50 lb. **Gravity Flow Design:** Allows for worry free performance. **Compact Storage:** Simply rinse, dry and fold in the off season.



Patent Pending

**Order # BF4675      \$39.95**  
Please Specify Green or Brown



## TEE POST FEEDER

- Free Flow feeder.
- No Batteries or Motors to Contend With.
- Simply Drive Tee Post at desired Feed Area, Mount Feeder and Fill. That Easy.
- Hardware Included.
- Use in Multiple Locations to Bring Them In.

Bracket is Also Designed to Mount On a Tree with Ratchet Straps. (Straps not Included)  
Mounts in Minutes. **80 Pound Capacity**

**Wt. 13 lb | Order # 71800**

**\$69.95**

**Tee Post Bracket | Order # 01800**

**\$29.95**



*Better to be humble in spirit with the lowly,  
than to divide the spoil with the proud*  
Proverbs 16:19



## RICE BRAN FEEDER

*Frequency Vibration technology prevents clogging and other failures.*

**10 GALLON CAPACITY**

**NO AUGERS OR GEAR MECHANISMS TO JAM**

Patent pending frequency vibration technology.

One on 1" moving part.

Keeps rice bran dry.

1 to 6 feed times per day.

1 to 30 second run times.

Test Feature.



Exterior Control Panel for easy access.



Sturdy Hanger Bracket.



Optional T-Post or Bracket.



**Order # BF73000**

**\$124.95**



*For I say, through the grace given to me, to everyone who is among you, not to think of himself more highly than he ought to think, but to think soberly, as God has dealt to each one a measure of faith.*

*- Romans 12:3*





## AQUA PRO AIR-DRIVE DIRECTIONAL FISH FEEDER

The Aqua Pro Fish Feeders are the most popular fish feeder in the industry today. Constructed of heavy gauge galvanized steel, making it the sturdiest unit available anywhere. All Internal seams are double sealed with silicone and industrial rubberized coating to help prevent moisture from affecting your valuable feed. Wiring is protected by 1/2" steel flex tube conduit to insure proper connection and years of trouble free service. **Made in the USA.**

### General Features:

**Power Supply:** 12 Volt Heavy Duty Re-Chargeable Gel Cell Battery with Solar Panel

**Timer:** Digital - Large, easy to read liquid crystal display. Simple Easy Programming. 100% Solid State Electronics.

**Feed Times:** Feed up to 8 Times Daily

**Run Time:** Adjustable 1-90 Seconds per Feed Time

**Warranty:** Two Years

**Assembly:** Minor Assembly Required.

No Special Tools Needed.

**Complete With:** Solar Panel | 12 Volt Gel Cell Battery Digital Timer

### FEED SIZE & TYPE

Pellet Size — 1/8 to 1/2

Floating Pellet

Sinking Pellet

Corn

### CAPACITY

75 lb.

112 lb.

150 lb.



Aproximate Spreading Pattern

**FREE**  
Battery Charger  
With Order



**Order # ADF-75D**

**\$439.95**

Additional Shipping Charges Apply. Delivery Weight 70 Lbs.



**Timer Only**  
Order  
# AHDF1  
**\$ 49.99**



## DIRECTIONAL FEEDER GREAT FOR FISH AND DEER!

### Features:

- 225 lb. poly barrel with conical bottom with quick release lid.
- Digital Clock Timer and Guard.
- Mounting hardware for dock post or hanger mounting.
- Dispenses feed with a 30 ft coverage area.
- Adjustable feed rate (1-30 sec).
- Feeds 1-16 times per day.
- Can feed different days of the week.
- Pre-wired for solar panel # BL-R680-S.
- 6 volt battery (not included) # DE650S.
- Two Models Available.

### HANGING MODEL

Order # F-AHDF1 **\$ 99.95**

### DOCK POST MOUNT

Order # F-AHDF1-DP **\$ 106.95**

**www.ontimegamefeeders.com or call us at 1-800-333-9143**



## THREE GREAT TIMERS TO SELECT FROM

*With A Lifetime Hassle Free Warranty.*

### LIFETIME FISH



Timer Slides  
Out Bottom

#### TIMER FEATURES:

24 Hour Quartz Clock

**Run Time:** Adjustable 1-20 seconds

**Feed Settings:** 1-12 per day

**Batteries:** Eleven AA (not included)

**Order # 50000 \$119.95**

### ELITE FISH



Timer Slides  
Out Bottom

#### TIMER FEATURES:

All Digital - Simple - Easy - Fast

**Run Time:** Adjustable 1-30 seconds

**Feed Settings:** 1-6 per day

**Batteries:** Ten AA (not included)

**Order # 50001 \$139.95**

### SOLAR ELITE FISH



Timer Slides  
Out Bottom

#### TIMER FEATURES:

All Digital - Simple - Easy - Fast

**Run Time:** Adjustable 1-30 seconds

**Feed Settings:** 1-6 per day

**Batteries:** 6 volt (Included)

**Order # 11116 \$174.95**

## SELECT THE FEEDER OF YOUR CHOICE

..... All Barrels Now Come With Conical Bottom .....

### HANGING



#### Features:

#### BARREL:

Used On Both Models.

Heavy 225 lb capacity Conical Poly Barrel w/  
Quick Release Locking Lid. Resist rust,  
corrosion, and they never need painting.

#### HANGING MODEL

**Hanger Bracket:** Designed So that lid can be  
removed without letting completely down.  
Comes With Hardware

#### DOCK MOUNT

**Barrel Ring:** Mounts to dock post or tree for  
easy access. Comes with hardware.

### DOCK POST MOUNT



TIMER	Order #	PRICE	TIMER	Order #	PRICE
Lifetime	F-50000	<b>\$179.95</b>	Lifetime	F-50000-DP	<b>\$183.95</b>
Elite	F-50001	<b>\$197.95</b>	Elite	F-50001-DP	<b>\$204.95</b>
Solar Elite	F-11116	<b>\$235.95</b>	Solar Elite	F-11116-DP	<b>\$239.95</b>

OTHER GREAT SUPPLIES ALSO AVAILABLE. GIVE US A CALL AT 1-800-333-9143



## HANGING FEEDER POLE

### Features:

Heavy 2" Square Tubing Pole is 14 ft Long, 2 ft Hanger Extension, 1000 lb Capacity Winch with 30 ft 3/16 Aircraft Cable, 2 Heavy Duty Pulleys.

Must be Shipped Freight Truck to a Business Location

Barrel and Feeder  
(Not Included)

Order # HFP **\$184.95**



## 1200 LB. CAPACITY WINCH

Economy Model:  
Comes with 30 foot galvanized Multi-strand style cable 3/16" and safety hook.

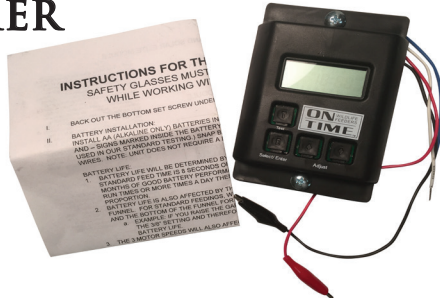
Order # 5204 **\$23.95**



*Watch and Pray that you enter not into temptation: the spirit indeed is willing, but the flesh is weak.*

- Matthew 26:41

## ON TIME UNIVERSAL DIGITAL REPLACEMENT TIMER



High Quality | Fits Most Feeder Motors  
For use on 6 or 12 Volt Systems.

### Features:

- Feeds Up To 6 Times A Day
- Adjustable Run Time Up To 30 Seconds
- Adjustable Motor Speeds
- Shown w/ Alligator Clips
- Easy Installation. Installs In Minutes

Order # DRT00503 **\$39.95**

## POST MOUNT RING

*Stop Hogs from Knocking over your Feeders.*

Simply Bolt to Pole or Tree.  
Fits any 18" Poly Barrel  
Hardware Included

Order # 00703  
**\$24.95**

Barrel and Timer  
Not Included



## UNIVERSAL REMOTE CONTROL

**NOT for ONTIME Timers**

- Used on 6 or 12 Volt Timer Systems
- Fits various motors and power sources
- Feed durations from 1-90 seconds
- Battery Included
- Up to 1000 ft. Range

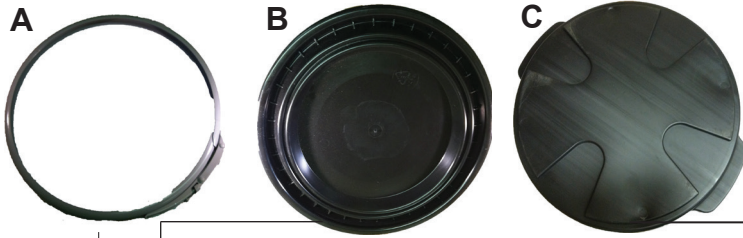
Order # UR2 **\$31.95**



*Why Did Jesus Come?  
To give light to those who sit in darkness and the shadow of death, to guide our feet into the way of peace."*

- Luke 1:79





## POLY LIDS AND BAND

- ➔ **A: Locking Band** - Fits all of our Conical poly barrels and most style barrels with similar band.  
**Order # 0060-MB \$9.95**
- ➔ **B: Plastic Lid** - Fits same as above  
**Order # 0060-PL \$9.95**
- ➔ **C: Fits Buckeye, Turkey, and Value Line Feeders**  
**Order # 0060-SNAPON \$9.95**

## METAL BARREL LIDS



**Sheds Water — EZ on EZ off.**

Prevents Squirrels from Robbing your feed.  
Nice 2" Lip edge, galvanized, seamless.

Fits all Poly Barrels 17-3/4".

**Order # DC30 \$24.99**

Fits all Standard 55 Gallon Metal Barrels

**Order # DC55 \$26.99**

## SIGHT GLASS



**Peel & Stick**

Great for any feeder. A quick glance lets you know the amount of feed you have.

Simple Installation. Drill a 1" to 1-1/2" hole, Peel and stick. Mounts on inside of Barrel. **Total time for**

**install: five minutes.**

**Order # SG \$4.95**

## HANGER BRACKET



**Fits: 18" diameter poly barrels**

**Order # 01001 \$14.95**

For 55 Gallon Metal Barrels  
See Feeder Accessories this section.



It is better to trust in the  
LORD than to put  
confidence in man.

**Psalms 118:8**

## BARREL RINGS



**STURDY BARREL RING**  
with hardware.

**A: Fits: 18" 32 Gallon**  
Diameter Poly Barrels.  
3-3/4" Leg Stubs

**# 00701 \$29.95**



**LARGER BARREL RING**  
with hardware.

**B: Fits: Standard 23-3/4"**  
55 Gallon Metal Barrels  
4-3/4" Leg Stubs

**# 00702 \$34.95**

## FOOT PAD KIT



Simply insert into the bottom of your  
feeder leg and stake down.

See pg. 41 for Stakes. # LS

**Fits 1-3/8 Legs.**

**Order # FP1 \$13.95**



## LEG KITS

Galvanized 1-3/8" Diameter x 30"  
Easy Slide Together Sections



SET	Order #	PRICE
3 Piece	00801	<b>\$12.95</b>
4 Piece	00804	<b>\$15.95</b>
6 Piece	00806	<b>\$19.95</b>
9 Piece	00802	<b>\$22.95</b>
12 Piece	00812	<b>\$26.95</b>

**Special 9 pc. Set:** 1-3/8" diameter x 50" X  
.065 easy slide together heavy sections.

Used On Our WU32 Feeders.

**Order #00809-50 \$69.95**

## POLY BARRELS



**Heavy Duty | Conical Bottom**

**Resist Rust & Corrosion | No Painting Needed**

18" diameter with a quick release locking lid. Pre-cut 2-1/4" hole for Feeder Timer. UV Protection with 9" Flat on Bottom. Accommodates almost all timers. 225 lb. Capacity — Height 32"

**Order # 00601-C \$36.95**

Additional Postage required

Replacement Parts

Plastic lid: # 0060-PL **\$9.95**

Metal band: # 0060-MB **\$9.95**

## LEG STAKE KIT



Three heavy stakes with clamps. Fits pipe up to 1-5/8" diameter. Stakes are 1/2" diam. X 24" long.

**Order # LSK3 \$12.95**

Single Stakes

**Order # LS \$ 3.95**

55 GALLON  
METAL BARRELS

Like New. Extremely clean.

**Pre-Cut 2-1/4" hole. Size: 23-1/2" diameter, Height 33-1/2"**

These are open top (no lid). **Order Heavy Duty Drum Cover # DC55** See pg 49.

**Order # 55B \$39.95\***

**\*SHIPS BY FEDEX**

Additional postage required

Call us at 1-800-333-9143



## BOLT ON STUB LEGS



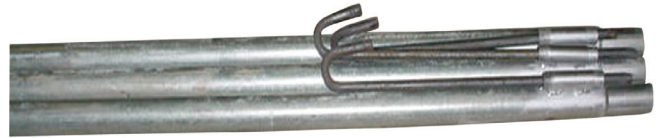
Bent to proper angle for Mounting to a variety of containers. 1" square tubing x 24" length.

*Mounting Hardware included  
Painted Black.*

**Order # SL3 \$26.95**

*For this reason, since the day we heard about you, we have not stopped praying for you. We continually ask God to fill you with the knowledge of his will through all the wisdom and understanding that the Spirit gives.  
- Colossians 1:9*

## HEAVY DUTY TRIPOD LEG KITS



**Pre - Drilled for Winch Mounting And Includes Leg Stakes. Designed Not to Hold Water**  
Galvanized 1-5/8" x .065 diameter heavy round tubing with Leg stakes. Leg stakes are 1/2" x 24" provide stability.

**Two Styles Available**

**9 pc. Set:** Consist of 9- 56" Easy Slide together sections  
Overall Height 13 ft. Ships FEDEX.

**Order # LK55-9 \$113.95**

**3 pc. Set:** Consist of 3 legs 13 ft. 3" length.  
Ships by LTL Truck to a business location.

**Order # LK55-3 \$109.95**

## INTERNAL FUNNEL

Centers easily with Downspout  
Fits standard **55 gallon**  
Drum. Heavy galvanized  
Seamless One piece with  
Downspout Allows complete  
emptying of your feed.



**Order # IF55 \$23.95**

## DRUM COVER

**EZ ON-EZ OFF**

Fits standard 55 gallon Drum.  
Heavy galvanized seamless metal  
lid, with extra wide lip edge.  
Fits diameters up to 23-3/4".



**Order # DC55 \$26.95**

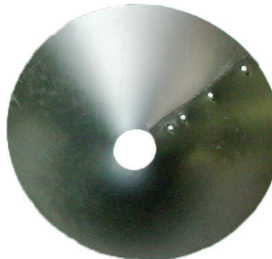
## INTERNAL POLY FUNNEL



Centers easily with Downspout  
Fits standard **55 gallon** Barrel.  
Heavy Poly Seamless One piece with  
Downspout. No Assembly required.  
Allows complete Emptying of your feed.

**Order # IF55-P \$21.95**

## POLY FUNNEL

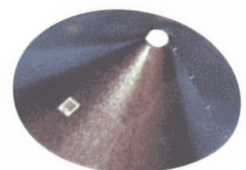


**Installs in Minutes**

Fits inside all 18" dia. Barrels.  
Hardware included  
Quick — Easy Assembly

**Order # 00803  
\$15.95**

## METAL FEEDER FUNNEL



All Metal Construction.  
Fits inside most 30, 35 & 55  
Gallon Barrels. Pre-punched  
holes and Self tapping screws  
make for easy installation.  
Hardware included

**Order # TF-3055  
\$19.95**



## TRIPOD TOP HEAVY DUTY

Made For 55 Gallon  
Heavy Duty 6" pipe  
With 1" Sq. tubing legs.  
Complete with 1200 lb.  
Cap. Forged eye bolt &  
2000 lb. cap. Pulley.

Order # TPTHD



**\$46.95**

## 800 LB. BRAKE WINCH

Automatic Brake  
No Spinning of Handle

**THINK SAFETY**

Keeping it Safe. Allows  
Safe Easy Lowering.  
Automatic Brake Holds  
Load in Position  
when handle is released.  
No cable, See below for sizes.



Order # DLB800A

**\$71.95**

## BARREL HANGER BAIL

No spacers to  
contend with.  
Fits 55 gal. Drums.  
Heavy duty  
construction with  
Hardware.

Order # BHB55



One Piece  
Assembly.

**\$24.95**

## WINCH CABLES

Galvanized aircraft style  
Multi strand Cable,  
3/16" with Safety hook.



25 ft. Order # WC 25

**\$ 21.95**

50 ft. Order # WC 50

**\$ 31.95**

## 2000 LB. CAPACITY PULLEY

Heavy Duty Single  
Sheave with hook.  
Use up to  
3/16" cable.

Order # P2000Pul



**\$11.95**

## 1200 LB. CAPACITY WINCH

Economy Model:  
Comes with 30 foot  
galvanized Multi-strand  
style cable 3/16"  
and safety hook.

Order # 5204

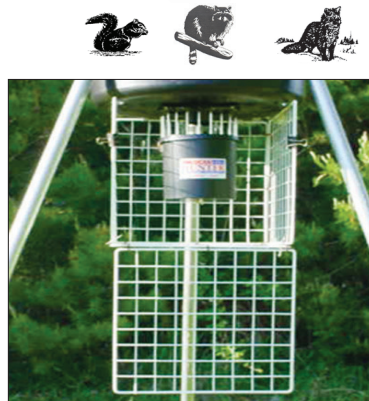


**\$23.95**

## VARMINT GUARD

Now comes with hold  
tight snap clips.  
Painted black with  
1-1/2 squares  
14 x 14 size fit a  
variety of barrels.  
Comes with all  
mounting hardware.

Order # VG



**\$21.95**

the tax booth, and He  
n, "Follow Me!" And  
and followed Him.

*And we know that all things work  
together for good to those who love  
God, to those who are the called  
according to His purpose.*

— Romans 8:28



## BARREL STABILIZER

Keeps Barrel Secure and Prevents swaying in windy conditions or Animal Nudging. Slide band on barrel, wrap chain around legs and snap with three snap hooks included.

**Fits:** Standard  
55 gallon  
barrel.

**Order # BS55**

**\$32.95**

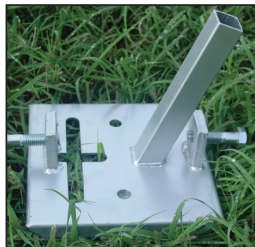
**Fits:** On Time  
& American  
Hunter poly  
barrels. All  
18" diameter  
Barrels.

**Order # BS32**



## HEAVY DUTY FOOT PAD

Feet are designed to accept a T-Post through the center of the foot. The feet are large 7" square steel plates. Each foot has a large nut welded to it and a 1/2" bolt that when tightened secures the feeder to the T-Post. This will not only protect the feeder but keep it level and immobile. Feet will receive any pipe or tubing with an I.D. of 1.25" or larger. The Square tubing on the Deluxe feet is 7/8" square tubing.



**Order # FPHD**

**\$13.95**

## TEE PEE TOP ASSY

Ideal for building your own Winch Up feeder. Heavy 4" pipe with 3-4" sq. tubing legs. With 300 lb. cap. eyebolt & 2000 lb. capacity pulley. See this section for hand winches & leg kits. Used in our WU-32 gal. feeders.

**Order # 00207C-Assy**

**\$42.95**



## GRAVITY FLOW FEED PLATE ASSY.

### ASSEMBLED - FREE CHOICE

Galvanized 18 gauge special Perforated plate. Prevents Water from standing on the Feed Plate or being wicked up In the down pipe. Down pipe Construction is of Heavy Duty 4" schedule 40 PVC pipe. Height 17".



**Order # GFFP- ASSY.**

**\$39.95**

## SOLAR CHARGERS

### Keep Your Batteries Charged Year Round

Convert Sunlight into electric power. Ideal for charging a rechargeable battery. Maintenance Free Solar Power gives years of use at no cost. Weather proof, Rust Proof, Corrosive resistant. Comes complete with mounting bracket and hardware.



### Heavy Duty Models

**6 volt** **Order # BL-660S** **\$24.95**

**12 volt** **Order # BL-1260S** **\$46.95**

### Economy Models

**6 volt** **Order # BL-EC6S** **\$15.95**

**12 volt** **Order # BL-EC12S** **\$22.95**

*Humility does not mean thinking less of yourself than of other people, nor does it mean having a low opinion of your own gifts. It means freedom from thinking about yourself at all.*



## RECHARGABLE BATTERIES



# DE650S



# DE1270DC



# DE1270DC



# DE645DC



# 00600

Battery/ Price	Volts/ Amp Hr.	Size L x W x H	Some Applications
DE-650S <b>\$10.99</b>	6V-5AH	3-3/4 x 2-1/8 x 4-1/2	American Hunter R-Models, Lanterns
DE-1270DC <b>\$19.99</b>	12V-7AH	5-7/8 x 2-1/2 x 3-3/4	Aqua Pro Fish Feeder, Various Game Feeders
DE-6120DC <b>\$18.99</b>	6V-12AH	6 x 2 x 3-3/4	Game Feeders, Head Lamps, House Alarms
DE-645DC <b>\$9.99</b>	6V-4.5AH	2-3/4 x 1-7/8 x 4	Game Call, Motorized Ducks, Spotlights
00600 <b>\$9.99</b>	6V-1.2AH	3-7/8 x 1 x 2	OnTime Solar Elite, Flash Lights, Alarms

BATTERY CHARGER  
6 & 12 VOLT

Plugs into a 110 volt outlet. Using a switch select a 6 or 12 volt charge. Output is 500 ma DC.

Order # BL-C6/12 **\$11.95**

OPTIONAL  
SOLAR  
PANEL

Fits ONTIME Tomahawk  
VL Series and Other Models  
FOR USE WITH  
6 VOLT OPERATIONS

Order # 42400  
**\$23.95**



## INDUSTRIAL ALKALINE BATTERIES



SIZE	Order #	PRICE
AA Battery	AA-12	<b>\$6.99</b> Box of 12
C Battery	CBAT	<b>\$1.25</b> Each
9 Volt	9VBAT	<b>\$2.25</b> Each
D Battery	DBAT	<b>\$1.75</b> Each

*This is how we know who the children of God are and who the children of the devil are. Anyone who does not do what is right is not a child of God; nor is anyone who does not love his brother.*

- 1 John 3:10





NEW FOR  
2019

## 80 LB CAPACITY SEEDER/SPREADER



***Boss Bucks ATV seeders/spreaders can do multiple jobs!***

Made of Heavy Gauge Metal this unit will get the job done. Powered by a 12 volt Heavy Duty Motor it can Spread feed, seed, salt & fertilizer in a directional path.



### FEATURES:

- UV stabilized rubber latch
- 4-Prong Tail Light Adapter Included
- Wireless Receiver
- Adjustable Nozzle
- 2-pc Receiver Hitch
- Spread food plot mix
- Quickly spread fertilizer
- Salt your driveway ( Large Salt )
- Spread grass seed
- Corn Senders and Trails

**Order # BB80SP      \$ 269.95**

**OTHER GREAT SUPPLIES ALSO AVAILABLE. GIVE US A CALL AT 1-800-333-9143**





## ***GREAT FOR SPREADING FERTILIZER-FEED-SEED CORN & SALT!***

*Lifetime Warranty On Electric Motor*

### Features

**Motor:** 12 Volt High Torque-4000rpm - Comes with 2 Spin Plates and Deflector Plate to Prevent Fertilizer From Contacting ATV or UTV.

**Hopper:** Poly Hopper. 100 lb.

Capacity. Quick Release Locking Lid

**Specs:** Weight 32lb — 18" Diameter — Height 31"

**CHOOSE THE MOUNTING OF YOUR CHOICE.**

**See next page.**

*Brackets are Available Separately. Add - B to Unit Part Number For Bracket Only*

**— NOTE: OUR MOUNTING BRACKETS MUST BE USED WITH BARREL RING 22000-BR —**

## REPLACEMENT PARTS

### ATV Wiring Harness

With On/Off Switch  
Length - 9 feet.  
Included with unit.

Order # 08762

**\$18.95**



### Truck Wiring Harness

With Cigarette Lighter  
Plug. Length 14 ft.

Order # 08760

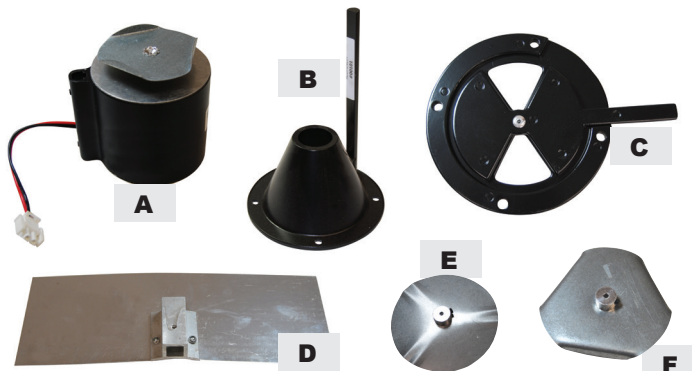
**\$18.95**



### Replacement Lid Assembly

Order # 00256

**\$32.95**



REF	DESCRIPTION	Order #	PRICE
A	Motor Only	22003	<b>\$49.95</b>
B	Mounting Funnel	00101	<b>\$19.95</b>
C	Regulating Gate	08761	<b>\$19.95</b>
D	Deflector Shield	00104	<b>\$12.95</b>
E	Spin Plate # E	00102A	<b>\$ 5.95</b>
F	Spin Plate # F	00102	<b>\$ 5.95</b>
A-F	Complete Assembly	22003-ASSY	<b>\$79.95</b>
NP	Barrel Ring	22000-BR	<b>\$29.95</b>

PLATES	DEER CORN	SEED	FERTILIZER
#F	40 - 50 ft.	10 - 12 ft.	20 - 24 ft.
#E	4 - 6 ft.	4 - 6 ft.	4 - 6 ft.

*Watch therefore, for you know not the  
day nor the hour in which the  
Son of Man is coming.*

*— Matthew 25:13*

**www.ontimegamefeeders.com or call us at 1-800-333-9143**



## CHOOSE YOUR MOUNTING STYLE

**Mounting Brackets Only \$39.95**

Add - B to unit part #. Must be used with our part # 22000-BR



### ATV MOUNTING

Mounts to Wire Mesh or Tubular Racks. Simple, Quick, Easy Mounting With Special Clamps

**Order # 22005 \$169.95**



### UTV STYLE MOUNT

Shown on a Kawasaki Mule.

Bracket Slips Over Any Tailgate Width of 1-1/2".

**Order # 22004 \$169.95**



### 2" RECEIVER MOUNT

**FITS:** 2" Receiver - Comes With Receiver Pin. Fits Most UTV's And Pick Ups. Bracket Measures; Center Pin Hole To Bend 19" - 18" Tall

**Order # 22002-RHP \$169.95**



### POLARIS ATV MOUNT

For Composite Made Racks

**Order # 22001 \$169.95**

### *How does the spreader work?*

Simply mount bracket, install motor, connect the wire harness # 08762 (Provided With Spreader) to Your ATV or UTV Battery. Then plug spreader into Harness. For Truck Applications Harness # 08760 (Sold Separately) is Required. Fill seeder and go.



### ATV ADJUSTING ARM KIT

Allows you to adjust the amount of seed or fertilize being spread without getting off your ATV. Simple, Fast installation

**Order # 22000-AH \$9.95**



## KODIAK STANDARD DUTY

## Features:

Gearbox: 40 HP. **5 year warranty**  
 Top Link: Floating  
 Stump Jumper: Pan Style  
 Deck Thickness: 11 GA Steel  
 Sides Bands: Heavy Duty 7" Channel.  
 Wheels: Laminated, With Greasable Hubs  
 Cutting capacity: 2"  
 Slip Clutch: Optional  
 Driveline: Series 4



*Front & Rear Chain Guards are available*

**Chain Guards Optional - Not Included**

SIZE	WEIGHT	ORDER #	PRICE
4 FT	436	RC-EC48K	<b>\$1125.00</b>
5 FT	510	RC-EC60K	<b>\$1175.00</b>
6 FT	645	RC-EC72K	<b>\$1425.00</b>



*Front & Rear Chain Guards are available.*

**Chain Guards Optional - Not Included**

## KODIAK MEDIUM DUTY

## Features:

Gearbox: 90 HP. **5 year warranty**  
 Top Link: Floating  
 Stump Jumper: Solid Round- 5/8" Solid  
 Deck Thickness: 11 GA Steel  
 Sides Bands: Heavy Duty 7" Channel.  
 Wheels: Laminated, With Greasable Hubs  
 Cutting capacity: 2"  
 Slip Clutch: Optional  
 Driveline: Series 4

SIZE	WEIGHT	ORDER #	PRICE
5 FT	615	RC-MD60K	<b>\$1395.00</b>
6 FT	755	RC-MD72K	<b>\$1575.00</b>

## KODIAK HEAVY DUTY

## Features:

Top Link: Floating  
 Gearbox: 90 HP. **5 year warranty**  
 Slip Clutch: Standard  
 Stump Jumper: Round- 5/8" Solid  
 Deck Thickness: 3/16 or 7 GA Steel  
 Sides Bands: Heavy Duty 8" Channel.  
 Wheels: Laminated Dual Wheels ( Single On 5 ft )  
 With Bearing Hubs  
 Cutting capacity: 3"  
 Heavy drivelines.



*Front & Rear Chain Guards are available.*

**Chain Guards Optional - Not Included**

SIZE	WEIGHT	ORDER #	PRICE
6 FT	1205	RC-HD72K	<b>\$2495.00</b>
7 FT	1375	RC-HD84K	<b>\$2795.00</b>



## KODIAK HEAVY DUTY 8 FT

### Features:

Gearboxes: 100 Hp center / 90 Outboard Hp

**5 year warranty**

Top Link: Floating

Stump Jumper: 5/8" Thick Solid Round

Deck Thickness: 10 GA Steel

Sides Bands: Heavy Duty 7" Channel.

Wheels: Laminated Dual Wheel With Bearing Hubs

Cutting capacity: 2"

Driveline: Series 5 With Thick Slip Clutch.

Center Shafts Shock Coupler Protected

Minimum Hp Required: 38 Hp

**Front & Rear Chain Guards are available**



**Chain Guards Optional - Not Included**

	SIZE	WEIGHT	ORDER #	PRICE
	8 FT	1125	RC-HD96K	<b>\$3550.00</b>
<i>Pull Type</i>	8 FT	1225	RC-HDPT96K	<b>\$4850.00</b>



**Front & Rear Chain Guards are available**

**Chain Guards Optional - Not Included**

## KODIAK HEAVY DUTY 10 FT

### Features:

Gearboxes: 100 Hp center / 90 Outboard Hp

**5 year warranty**

Top Link: Floating

Stump Jumper: 5/8" Thick Solid Round

Deck Thickness: 3/16 or 7 Gauge

Sides Bands: Heavy Duty 8" Channel.

Wheels: Laminated Dual Wheels  
With Bearing Hubs

Cutting capacity: 2"

Driveline: Series 5 With Slip Clutch.

Center Shafts Shock Coupler Protected

Minimum Hp Required -52

	SIZE	WEIGHT	ORDER #	PRICE
	10 FT	1470	RC-HD120K	<b>\$4295.95</b>
<i>Pull Type</i>	10 FT	1780	RC-HDPT120K	<b>\$5795.00</b>



**DELUXE SPREADER**

500 Pound Capacity

**FEATURES:**

Category 1 Pins — No Sharp Edges  
Heavy Duty Hopper  
Bottom Drop Easily Cleaned  
Low Maintenance

Spreads 15'-55' Depending on Material.  
May Position For Right, Left, and Center Spreading.  
For Tractors 20HP and Up. No Assembly Required.

Order # M-XA300, Wt. 145 lb **\$ 495.00**

**DELUXE PULL SPREADER**

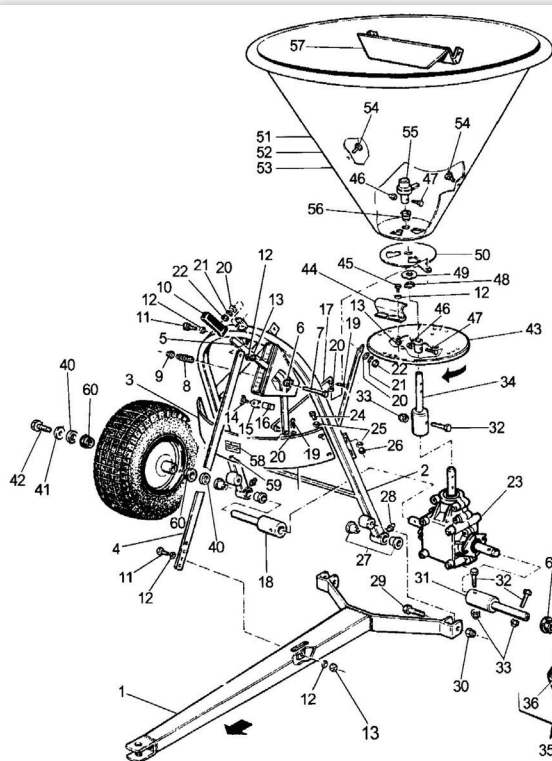
300 Pound Capacity



*Ideal for Spreading Seed — Fertilizer  
Pellet Lime — Insecticides*

Pull with a Lawn Mower, ATV or Small Tractor. Heavy Duty steel hopper with agitator. Material drops out bottom, Not the sides, provides easy cleaning. Spreads up to 28 Ft, depending on material. Center Spreading Only - Not Adjustable. No Assembly Required. Ships by Freight Truck.

Order # M-SP150, Wt. 100 lb **\$ 750.00**



**Parts for Model M-SP150 Pull Behind Spreader  
Most Common Parts**

Ref 43

**Spreading Disc**

Order # SP51005

**\$ 69.95**

Ref 44

**Vane (Priced Each) (4 Used)**

Order # SP51008

**\$ 5.95**

Ref 50

**Adjustment Disc**

Order# PA251018A

**\$ 16.95**

**Parts for Model M-XA300 Three Point Hitch Spreader  
(Parts Breakdown NOT Shown) — Most Common Parts**

**Spreader Vanes (Priced Each) (4 Used)**

Order # PA251023

**\$ 5.95****Spreading Disc - With Vanes**

Order # PA251010

**\$ 69.95****Adjustment Disc - 2 Hole**

Order # PA251018A

**\$ 16.95****Adjustment Disc - 3 Hole**

Order # PA251019A

**\$ 16.95**

**WE CARRY A LARGE INVENTORY OF SPREADER PARTS. GIVE US A CALL!!**



## COVINGTON PLANTER

Plants & Fertilizes in one trip operation. Comes with a variety of seed plates, (corn, beans, peanut, peas etc), as well as a 6T, 10T, 12T sprockets. Features a vibrator fertilize distributor, adjustable presser wheel for varying depth of your fertilize and seed. Seed spacing is varied by changing sprockets.

Comes Assembled

Order # G-TP46, Wt. 190 Lb

**\$ 1475.00**

Also Available In 2 Row Model Includes Cultivator

Order # G-TP462R9, Wt. 755 Lb

**\$ 3395.00**



## 12MX PLANTER

- Plants and Fertilizes on One Trip Operation.
- Set Seed Depth with Handle.
- Adjustable Fertilizer Rate.
- Includes 3 Planter Plates - Corn, Beans and Peas.
- Includes 4 Gears for Seed Spacing.
- Seed Opener is Independent of Presser Wheel, so you can get even, Consistent Planting even in Rough Terrain.



**Ideal For The Small Farmer, Yet Flexible Enough For Large Truck Patch Operations.** Heavy Duty 3 Pt Hitch. Additional Planter Plates Avail.

*Includes Toolbar*

One Row

Order # G-12MX, Wt. 161

**\$ 1050.00**

Two Row

Order # G-12MX2R, Wt. 370

**\$ 2295.00**



## COVINGTON SIDEDRESSER

*Can Be Used As A One or Two Row*

Special Vibrator Pan busts up lumpy fertilizer. Fertilizer boxes are adjustable. **Simple - Quick - Easy**, simply loosen two set screws and slide to desired position. Frame is Heavy Wall Square Tubing 2" x 2" x 80". Shown with Wood Fertilizer Boxes (most popular). Items are sold separate.

DESCRIPTION	MODEL	WEIGHT	PRICE
Side Dresser (Each)	G-TP3A	79	<b>\$490.00</b>
Frame Only	G-TP3AF	165	<b>\$266.00</b>
Side Dresser w/ Frame	G-TP3AWF	244	<b>\$720.00</b>

*Bear one another's burdens, and so fulfill the law of Christ. For if anyone thinks himself to be something, when he is nothing, he deceives himself.*

**- Galatians 6:2-3**

**OTHER GREAT SUPPLIES ALSO AVAILABLE. GIVE US A CALL AT 1-800-333-9143**



## 15 OR 25 GALLON ECONOMY SPRAYERS

### Features:

- Polyethylene Tank
- In Tank Filter System
- 12 Volt Pump; 1.0 G.P.M; 35 P.S.I.
- Handgun Sprays Up To 15'
- 8' Of 3/8" Rubber Hose
- 10' Wire Harness W/ Battery Clips
- Tank Drain



15 Gallon | Order # M-SS15COOP

**\$ 119.95**

25 Gallon | Order # M-SS25COOP

**\$ 129.95**



## 15 OR 25 GALLON STANDARD DUTY *Heavy Duty And Dependable*

### Features:

- Polyethylene Tank
- In Tank Filter System
- 12 Volt Shurflo Pump W/ Toggle Switch;
- 2.2 G.P.M; 100 P.S.I.
- 18" Handgun W/ Adj. Pattern Tip; Maximum Horizontal - 30 Ft.; Maximum Vertical - 18 Ft.
- 15' Of 3/8" Rubber Hose
- 10' Heavy Duty Wire Harness With Battery Clips
- Tank Drain

15 Gallon | Order # M-SS15

**\$ 181.95**

25 Gallon | Order # M-SS25

**\$ 191.95**

## 55 GALLON SPOT SPRAYER

### Features:

- 55 Gallon Corrosion Resistant Polyethylene Tank
- Inline Deluxe Strainer For Easy Access and Cleaning
- By-pass Agitation Valve
- 12 Volt SHURflo Pump With Toggle Switch; 2.2 G.P.M; 100 P.S.I.
- Spraying Systems 43LA-AL Hand gun Sprays 30' To 40' Horizontal
- 15' of 3/8" Rubber Hose
- 15' Heavy Duty Wire Harness With Battery Clips
- Tank Drain



55 Gallon | Order # M-SS55

**\$ 399.95**

**www.ontimegamefeeders.com or call us at 1-800-333-9143**



## KICKBACK BOOM ASSEMBLIES OPTIONAL

8 ft. & 15 ft. COVERAGE

**Coverage:** 8 ft. with 5 Teejet nozzles on 20" spacing. 15 ft. with 9 Teejet nozzles on 20" spacing

**Kickback Feature:** Should Boom strike an object, it simply folds back to Prevent damage.

Great for Transporting. Constructed of 1" 16 gauge Sq. Tubing Assembly. Simple-Quick & Easy. With Instructions.



8 Ft. Coverage

Order # CS55BATV **\$ 140.00**



15 Ft. Coverage

Order # CS150BATV **\$ 185.00**

### REPLACEABLE GUNS



#### TEEJET SPOT SPRAYER GUNS

Constructed of molded polypropylene for Excellent Chemical Resistance & Durability.

Rated 150 PSI- works with 3/8" ID hose.

Overall Length 32"

Order # 22670-PP **\$ 36.95**

Overall Length 23"

Order # 50800 **\$ 19.95**



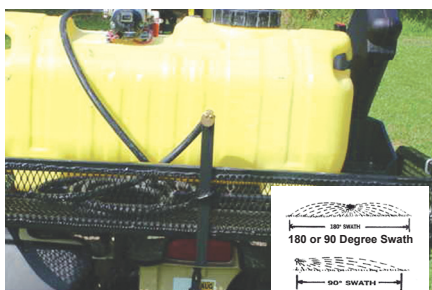
#### VALLEY GUNS

Rated to 300 PSI, 6 GPM. Spray tip adjusts from bullet spray to cone spray.

Overall Length 26"

Order # 5273959 **\$28.95**

### BOOMLESS NOZZLE - 25 FT COVERAGE



Ideal for Spraying Areas where a Boom Is Not Feasible, Fits Tubular or Wire Mesh Racks Easy to Install. Comes with Mounting Hardware.

Order # ATV-BN2

**\$49.95**

### SPRAYER PUMPS



To Fit Many Different Model Sprayers.

1.0 GPM - 45 PSI 3/8" Female Ports  
Order # 527-5086 **\$ 54.95**

1.8 GPM - 60 PSI 3/8" Female Ports.  
Order # 8007-593-836 **\$ 89.95**

2.1 GPM - 100 PSI 3/8" Female Ports  
Order # 8007-594-838 **\$ 106.95**

3.0 GPM - 45 PSI 1/2" Male Ports  
Order # 2087-593-135 **\$ 127.95**

## 25 GALLON TOW BEHIND SPOT SPRAYER

#### Features:

**Pump:** Shurflo On Demand 1.8 GPM @ 60 PSI

**Tank:** 25 gal. Poly tank with large Screw on lid with Drain cap.

**Gun:** 26" Aluminum, adjustable nozzle tip  
For stream or fan spraying with Safety Lock  
8 ft. hose.

**Frame:** Heavy square tubing.

**Tires:** 600 x 6 - 15" tall.



Optional 8ft 5 Jet Boom Assembly  
ORDER # SSBA **\$140.00**

Order # SS25TM **\$399.95**



*Then the Lord said, "I give you every seed bearing plant on the face of the earth and every tree in it. They will be yours for food"..... And it was so.*

— Genesis 1:29-30

OTHER GREAT SUPPLIES ALSO AVAILABLE. GIVE US A CALL AT 1-800-333-9143



## CHAIN SAW CARRIER



Allows you to carry your chain saw Safely and Secure. Our carrier prevents damage to your chain. Any oil and gas leakage from your saw is kept to the outside of your ATV.

Simple, easy to install on a wire mesh or Tubular rack, front or rear. Carries a chain saw up To a 20" bar. Hardware included. Weight 6 lb.

**Order # CSC**

**\$34.95**



*And they said, believe on the Lord  
Jesus Christ, and thou shalt be  
Saved and thy house. Acts 16:31*

## CHROME TRAILER BALLS

1-7/8" Ball: 2000 lb. cap.  
With 3/4" diameter shank

**Order # 3204C**

**\$10.95**

2" Ball: 3500 lb. cap.  
With 3/4" shank

**Order # 3205C**

**\$ 9.95**



## FRONT TOW HITCH



Simply attaches to the front frame. Fits pipe diameter 1-3/8". Screw type clevis allows for easy insertion of Tow strap, winch cable or chain.

**Order # THF**

**\$19.95**

## REAR TOW HITCH



Solid Steel Hitch: Hook your tow strap or winch cable- pull safely. Pulling from a rack can be dangerous and expensive. Fits: Standard 3/4" hole  
Simple Installation: Install ball and Hitch as one unit. Ball Not Included.

**Order # TH**

**\$19.95**

**We Also Carry Parts  
and Equipment  
For Your  
Hunting And  
Gardening Needs .**



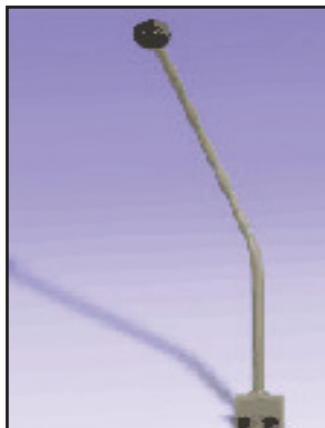
**1-800-333-9143**



## UNIVERSAL STICK SHIFT

Shift by hand or foot.  
Fits most ATV's  
Great for women, children  
& the handicapped. Change  
gears in the mud and keep  
your feet dry at the same  
time. Simple installation.

Order # USS  
**\$29.95**



## GAME SKINNER

*Skinning Doesn't Have to be a  
Messy Two Man Job*



Just Hang Your Game Or Catfish  
& You're ready. Holds Securely in Place.

Order # GS **\$22.95**

1-1/4"

## RECEIVER HITCH

Off Road Use Only.  
Fits all 1-1/4" Receivers.

Order # MRHB  
**\$24.95**



## RECEIVER ADAPTOR

Converts 1-1/4" to 2"  
Off Road Use Only

Order # ATV-CV  
**\$24.95**



## FUEL TANK REPAIR KIT

*Great For All Metal Tanks!*



— TREATS A 3 GALLON TANK —

### KIT CONSISTS OF

**Rust Dissolver:** Etches the metal and  
removes Oil & Grease

**Rinse Conditioner:** Removes moisture and residue

**Tank Liner:** Coats the tank

ORDER # FTK **\$46.95**

## LOW PRESSURE GAUGE

**LIFETIME  
WARRANTY**

Designed to stay accurate, full gear  
brass movement. Large easy to read  
dial. 0-60 psi range in 1lb incre-  
ments. reading stays until relief vale  
is depressed. Every gauge is tested before packaging.  
Guaranteed Accuracy.

Order # T600XG **\$13.95**



## C V BOOT REPAIR KIT

Consists of One Boot, Four Clamps & Grease Packs



Starting at **\$17.95**. Call for Application



*Brothers, if someone is caught in sin, you who are spiritual should restore him gently. But watch yourself, or you also may be tempted. Carry each other's burdens, and in this way you will fulfill the law of Christ.*

*Galatians 6:1-2*





## Features:

**Many Other Models  
to Choose From!**

**Frame:** Welded Square Tubing

**Floor:** 3/4 Marine Grade Plywood 40 Yr. Guarantee

**Exterior:** 26 ga. Metal with Baked On Finish (Mossy Oak Bottom Land) 40 Yr. Guarantee

**Ceiling:** Ht 6'6" from floor to ceiling peak

**Roof:** 45 degree pitch. Deflects rain from direct impact making it one of the quietest blinds on the market.

**Interior:** Floor-Walls-Ceiling has commercial grade indoor/outdoor carpeting. 4" Shooting Shelves on all Windows. New Arm rest shooting shelves which fit across blind. Extra Adjustable Upper Shelf for storage items.

**Windows:** 360 degree view, Horizontal Sliding Tinted Plexy Glass. Drip Edges over all Windows.

**Leg Sockets:** 4"x4" sq Tube sockets welded in corners to accept 3" square tubing (standard on tower blinds) or accepts a std 4"x4" (to use on blind only models)

**Tower:** Comes complete with 3x3 legs, cross braces, Front Porch, stairs and handrails

Now Available With Drop Down Windows.

Also Available With 12 Foot Towers.

Call For Pricing or Visit Our Web Site.

### *Also Available In 12 Foot*

**5 x 6 Bow Blind = 9 Gun & 3 Bow Windows**  
**5 x 8 Bow Blind = 10 Gun & 6 Bow Windows**

## Models Available

Size	Tower	Order #	Price
<b>Standard</b>			
4 x 6	Blind Only	# TAS46	<b>\$1750.00</b>
4 x 6	5' Tower	# TAS546	<b>\$2645.00</b>
4 x 6	8' Tower	# TAS846	<b>\$2745.00</b>
5 x 6	Blind Only	# TAS56	<b>\$2050.00</b>
5 x 6	5' Tower	# TAS556	<b>\$2945.00</b>
5 x 6	8' Tower	# TAS856	<b>\$3045.00</b>
5 x 8	Blind Only	# TAS58	<b>\$2500.00</b>
5 x 8	5' Tower	# TAS558	<b>\$3395.00</b>
5 x 8	8' Tower	# TAS858	<b>\$3495.00</b>
<b>Bow/Gun</b>			
5 x 6	Blind Only	# TAS56BG	<b>\$2200.00</b>
5 x 6	5' Tower	# TAS556BG	<b>\$3095.00</b>
5 x 6	8' Tower	# TAS856BG	<b>\$3195.00</b>
5 x 8	Blind Only	# TAS58BG	<b>\$2700.00</b>
5 x 8	5' Tower	# TAS558BG	<b>\$3595.00</b>
5 x 8	8' Tower	# TAS858BG	<b>\$3695.00</b>

*Put on the whole armor of God, that you may be able to stand against the wiles of the devil. For we do not wrestle against flesh and blood, but against the principalities, against powers, against the rulers of the darkness of this age, against spiritual host of wickedness in heavenly places.*  
Ephesians 6:9





**ONE TOUGH BLIND DESIGNED TO PROVIDE RUGGED USE FOR YEARS**  
***AT AN AFFORDABLE PRICE!***

**Construction:**

UV-stablized polyethylene.  
 Ribbed walls.  
 Pre-installed aluminum window tracks and door support.  
 1/2" plywood floor.

**Color:**

OD Green

**Visibility:**

7" x 29" window opening in each panel  
 (4 in the 4x4 model, 6 in the 4x8 model).  
 Tinted window covers  
 (Should be installed one in each channel  
 and then overlapped)

**Off-Season Security:**

Lockable door with piano hinge.  
 Off-season window covers for the window openings.  
 (To install Off-Season insert, remove windows and slide  
 the insert into the inside channel closest to the wall)

The Blynd comes with assembly instructions and hardware.  
 It should be able to be assembled within 45 – 60 minutes  
 by two people with a cordless drill and a Phillips head bit.



Box Only.  
 Pictured with Full Door.



Box Only.  
 Pictured with sliding door.

### 4'x4' Ground Blind (1 Person)

Full Door (Give us a call at 1-800-333-9143 for sliding door prices)

4 x 4 (Box Only)	# TBB44	<b>\$800.00</b>
4 x 4 (Box w/ 1 Ft Tower)	# TBB441	<b>\$875.00</b>
4 x 4 (Box w/ 5 Ft Tower)	# TBB445	<b>\$1085.00</b>
4 x 4 (Box w/ 10 Ft Tower)	# TBB4410	<b>\$1150.00</b>
4 x 4 (Box w/ 15 Ft Tower)	# TBB4415	<b>\$1350.00</b>

### 4'x8' Ground Blind (2 Person)

Full Door (Give us a call at 1-800-333-9143 for sliding door prices)

4 x 8 (Box Only)	# TBB48	<b>\$875.00</b>
4 x 8 (Box w/ 1 Ft Tower)	# TBB481	<b>\$960.00</b>
4 x 8 (Box w/ 5 Ft Tower)	# TBB485	<b>\$1170.00</b>
4 x 8 (Box w/ 10 Ft Tower)	# TBB4810	<b>\$1240.00</b>
4 x 8 (Box w/ 15 Ft Tower)	# TBB4815	<b>\$1430.00</b>

**DOORS AVAILABLE**  
 Full Size, and Sliding

**TOWERS AVAILABLE**  
 1, 5, 10, & 15 Foot

**SHIPPING COST INCLUDED WHEN  
 SHIPPED TO A BUSINESS.  
 HANDLING  
 CHARGES MAY APPLY.**



When you need extra visibility around the farm or field, the versatile all weather Vision Works Camera Observation System can give you the edge. Eliminate blind spots and improve day and night visibility with its 120 degree viewing angle, 700 TVL resolution with IP68 weatherproof rating. **Visibility in the Dark**, made to withstand Off-Road conditions. Digital Color LCD Screen, Power Indicator, POWER Button, MENU Button, VOLUME Button, Channel Selection, VIDEO/AUDIO Input. Back of Monitor: Support attaching slot, Connection cable.



## 5" LICENSE PLATE STYLE SYSTEM

License Plate Camera  
5" LCD Monitor  
Suction Cup Mount  
Color Night Vision  
IP 68 Durability Rating

**ORDER # VWIC500-L**

**\$199.95**

### CAMERA BUNDLES PLUGS RIGHT INTO YOUR TRACTORS SYSTEM. FITS:

Trimble  
Raven  
TeeJet  
AgLeader  
John Deere  
AgCo  
Outback  
TopCon  
AutoFarm  
Apache  
RBR  
New Holland  
Case

**STARTING AT**

**\$160.00**

## 5" COMPLETE SYSTEM

Standard Camera  
5" LCD Monitor  
Suction Cup Mount  
700 TVL Resolution  
IP 68 Durability

**ORDER # VWIC500**

**\$219.95**



## 7" COMPLETE SYSTEM

Standard Camera  
7" LCD Monitor  
Heavy Duty Mount  
700 TVL Resolution

**ORDER # VWIC700**

**\$269.95**



## 10" QUAD VIEW MONITOR SCREEN COMPLETE SYSTEM

Two Standard Cameras | 10" LCD Monitor  
Heavy Duty Mount | 700 TVL Resolution | IP 68 Durability Rating

**ORDER # VWIC104V2**

**\$679.95**



## 7" DIGITAL WIRELESS SYSTEM

Interference free signal | Records onto an SD card  
Approximately 1 hour of recording per GB  
Transmit up to 400 ft with a good line of sight!  
Use up to 4 cameras | 700 TVL and IP69

**ORDER # VWIC7WR**

**\$479.95**

**OTHER GREAT SUPPLIES ALSO AVAILABLE. GIVE US A CALL AT 1-800-333-9143**



# 70 TRACTOR PARTS CATALOG REQUEST FORM

Name \_\_\_\_\_

Address \_\_\_\_\_

City \_\_\_\_\_ State \_\_\_\_\_ Zip \_\_\_\_\_

Email \_\_\_\_\_

1. Cut out page to Mail Your Request OR Call us Toll Free at 1-800-333-9143
2. Mail to: Stevens Tractor  
3715 Hwy 71  
Coushatta, LA 71019
3. Please check the following to receive the right catalog:

☐

FORD/NEW HOLLAND

☐

ALLIS CHALMERS

☐

MASSEY FERGUSON/HARRIS

☐

LONG/WHITE/OLIVER

☐

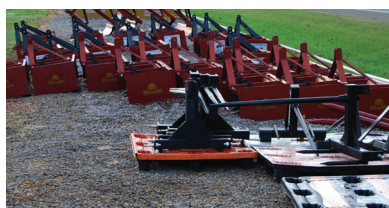
JOHN DEERE

☐

CASE / DAVID BROWN

☐

FARMALL/INTERNATIONAL

☐

SMALL FARM EQUIPMENT

[www.ontimegamefeeders.com](http://www.ontimegamefeeders.com) or call us at 1-800-333-9143



# ORDER INFORMATION

## CALL US TOLL FREE



**1-800-333-9143**

**During Regular Business  
Hours Central Standard Time**

## ONLINE ORDERING

### WEB SITE

### ONLINE ORDERING

[ontimegamefeeders.com](http://ontimegamefeeders.com)  
**24 Hours A Day**



Find us on Facebook @  
**stevenstractor**



Find us on Instagram @  
**stevenstractorcompany**



Find us on YouTube @  
**Stevens Tractor Company**

## PAYMENT

**CREDIT CARD:** We honor Visa — Master Card — Discover — American Express — Farm Plan

**CHECKS:** Send Check or Money Order, call for current prices before mailing. Any order received that has a balance due **will not** be shipped until paid in full. Please Do Not send cash or stamps.

**NO COD ORDERS:** You may send a check or money order in advance.

## SHIPPING

Fed EX, United Parcel Service (UPS) and United States Postal Service (USPS) will be used as the Common Carrier in most instances. **FedEx and UPS delivers to Physical Addresses Only** — No PO Boxes. Items exceeding size and weight limitations of Common Carrier will be shipped freight collect by commercial truck line. **2nd Day Air is available for credit card orders.** Call for rates. **Items Of Excessive size and weight may have additional shipping charges. All items not boxed are charged an additional \$13.50.** If your address has changed OR changed due to 911 in your area- Please let us know.

## RETURNED ITEMS

If you are not satisfied, please return merchandise **PREPAID within 30 days**. All merchandise to be returned **Must have Proper Authorization from Stevens Tractor Co.. Please write, fax or phone and tell us what you want to return and Why.** You will be issued a Return Authorization Number. Please include a copy of your invoice and note the Return Authorization Number on the invoice. Returns must be in condition as received. Proper refund will be issued after merchandise has been received. **For Merchandise Received after 30 days there is a 35% restocking charge.**

The Restocking charge does Not apply to our error in shipping or merchandise received defective.

**NO RETURN ON SALE ITEMS.**

## PRICES AND ERRORS

**Due to the Imposed and Changing Tarriff Taxes ,Prices are subject to change Without Notice.**

Errors - we are only human and we do make mistakes. We have tried very hard to correct all items, we apologize for any errors. We welcome your comments & suggestions. Out of Stock Items: It is our goal to ship all orders promptly as we receive them. **Not all items pictured in our Catalog are stocked.** Sometimes due to heavy demands or supply problems, certain items must be back-ordered. We will make every effort to ship your order within thirty days or refund your money.

## WE ARE AT CENTRAL STANDARD TIME

**REGULAR HOURS:** FEBRUARY - OCTOBER | Mon. - Fri. 7:30AM-5:00PM  
Saturdays 7:30am - 12.00pm

**WINTER MONTHS:** NOVEMBER – JANUARY Mon. - Fri. 8:00AM - 4:00PM  
CLOSE SATURDAYS

**HOLIDAYS CLOSED:** New Years Day — Memorial Day — July 4th — Labor Day — Christmas  
CLOSED ENTIRE WEEK OF THANKSGIVING





Stevens Tractor Co.  
3715 HWY 71  
Coushatta, La. 71019

ONE NATION  
UNDER GOD  
INDIVISIBLE  
WITH LIBERTY AND  
JUSTICE FOR ALL!



## GARDEN LINE DISC

- Low Profile -  
Ideal for Food Plots and Gardening

**4 FT TANDEM:** WITH  
12-16" BLADES

TRACTOR HP RANGE 20-35

Teflon Bushings  
Weight 334 lb  
ORDER # DH-WF4

**\$650.00**

## ON TIME ELITE

All aluminum with air tight seals.  
ADJUSTABLE 1-30  
SECONDS BATTERIES

See pg 22.



NEW PRODUCTS ON PG 21, 38-39 & 55.

Hope You Have a Safe Hunting Season! — May God Bless You —